

A Message From the President...

Fellow ASP Members-

In December of 1999, the ASP Board of Directors voted to accept a new contract with Wiley-Liss, the owner and publisher of our journal *The American Journal of Primatology*. The new contract is different in many ways from the earlier contracts with Wiley (which we have held since 1984). Most importantly, for the first time, the contract stipulates that ASP membership now includes a subscription to *AJP*. By linking subscriptions to membership, we are able to substantially reduce the cost of subscribing to *AJP*, thereby making it affordable to all (especially students) and giving everyone in ASP the benefits of receiving the journal. Recognizing the burden of professional dues on our colleagues from primate source countries, we are able to offer a number of complimentary memberships with subscriptions to such colleagues who cannot afford to pay.

The BOD did not take lightly the implications of the subscription/membership linkage. Indeed, discussions among BOD members lasted for over a year, and, as you may recall, we solicited the memberships' input on the topic via a questionnaire that many of you answered online at the ASP web site. From

that questionnaire, we learned that most of you supported the linkage. You agreed that the reduction in the costs of subscribing to the journal and the scholarly advantages of increased access to *AJP* by ASP members were important benefits of the plan. You felt that support of ASP's journal should be both a responsibility and a benefit of membership. In the end, the BOD voted in agreement with this sentiment. We were aware that some members of ASP would choose not to renew their memberships under these new conditions; the cost of membership, for them, would not be outweighed by the benefits of the journal subscription. We hope that the numbers of primatologists in this category are few, and we ask your help in recruiting



Linkage of membership and *AJP* subscription is not the only new feature of the contract. The rapid rise of electronic communication has generated new questions and uncertainties regarding the future of paper print publications. Consequently, professional organizations and publishing companies are experiencing new challenges and exploring new relationships with one another. Over the next decade, the leadership of ASP will be working hard to monitor the state of new publishing trends in an effort to maintain ASP's important role in the dissemination of primatological science.

Finally, I would like to express my personal sadness at the recent loss of our colleague and friend, Ray Rhine. Ray was a vivid presence in primatology and in ASP. He was fiercely devoted both to good science and to conservation, settling for nothing but excellence and success in both endeavors. Many of his conservation efforts and initiatives are reflected in current ASP policy and tradition, and thus his legacy is guaranteed. Like many of you, I will miss Ray a great deal; ASP will not be the same without him. - Nancy Caine, ASP President

Exciting Program Set for ASP 2000

Reserve your plane tickets now for this summer's meeting, because the program is looking great! We have a wonderful and diverse group of invited speakers lined up, and a load of symposia, workshops and roundtables, that promise to stimulate thought and discussion.

We will kick the program off with an address by keynote speaker, **Dr. Duane M. Rumbaugh** (Georgia State University, Department of Psychology and the Language Research Center). Dr. Rumbaugh's topic is, "The apes and us: Brain and emergent processes." Dr. Rumbaugh will review his position that we now have solid evidence for significant psychological continuity between apes and humans. He will portray the evolution and maturation of the primate brain as an information-sensitive structure that is particularly responsive to early rearing conditions.

Each of our three other invited speakers will also bring you up-to-date in their area of expertise. **Dr. Lynn Fairbanks** (UCLA) will speak on the intriguing topic, "The nurture

assumptions: Things your mother never told you". Dr. Fairbanks plans to describe her findings from years of studying vervet monkeys to shed light on two strongly held assumptions about parenting—that the ideal mother is unselfishly nurturant, and that variation in parenting style has lasting influences on the behavior of offspring. **Dr. Patricia Wright** from SUNY at Stony Brook, Department of Anthropology will address the group with findings from her extensive study of lemurs. Dr. Wright will describe some unusual characteristics of lemurs, and will hypothesize how they may have evolved. She will discuss long-term studies of lemur demography, life history and reproduction, completed in conjunction with data on tree productivity, phenology and climate.

Dr. David Amaral (University of California at Davis, Department of Psychiatry) will discuss "The neurobiology of social behavior", focussing on the role of the macaque amygdala in social interactions.

(continued on page two)

Rocky Mt. Welcome

Local arrangements for ASP2000 are well underway. A few reminders about Boulder Colorado are timely. First, it will NOT be hot this year at ASP; rather temperatures will be mild during the day and cool in the evenings. You might expect afternoon thunder showers.

Bring hiking shoes if you plan to participate in one of the scheduled hikes. Many of you indicated multiple choices for the recreation. We would appreciate it if you could prioritize those choices and please send that information by e-mail to Sandra DeBlois (sandra_de_blois@hotmail.com) so that we can arrange transportation. Also, we ask that you indicate whether you will have a car available to help with transporting people to the trails. The locations we have selected are within a 15-min drive from the hotel. At this time we are not certain if the hikes and zoo tour will be on Saturday afternoon or Sunday morning as the meeting schedule is still being set. Wildflowers will be in bloom during the meeting and it we

(continued on page two)

Program Details for ASP 2000

(continued from page one)

Thanks to all of you who have so successfully organized sessions for the meeting. We have five symposia, one workshop, and four roundtable discussion sessions planned—many more than last year! **Dee Higley** will host a symposium entitled “Acquisition and maintenance of social dominance in macaques and vervets” which will include a review of past studies, descriptions of current investigations, and ideas for research needed in the future. “Gestural communication in primates” has been organized by **Janette Wallis** and **Joanne Tanner**. Their symposium will compare the use of gestures, the contexts in which they occur, and the degree of intentionality involved, to gain insight into the evolution of communication. **Allyson Bennett** has developed a symposium entitled, “Nonhuman primate behavioral genetics”. This session will have a “teaching” emphasis, with lots of time devoted to questions and discussion, and will be useful to those interested in planning behavioral genetic studies. With an eye toward the future, **Sue Howell**, **Lynne Miller** and **Jo Fritz** have planned, “Creating a Niche in 21st Century Primatology or Where do we go from here?” Graduate students will present their current research, will describe how they are creating their own “niches” and will discuss their expectations for the future. **Rob Schumaker** and **Tara Stoinski** have put together a workshop on “Cognitive research in zoological parks” which will provide examples of high-quality, successful cognitive research recently conducted in zoos.

We have some interesting roundtable discussions planned as well. **Kate Baker** has organized one entitled, “Environmental Enhancement: Policy, Plans, and Perspective” which

will focus on the USDA’s 1999 Draft Policy on Environmental Enhancement for Nonhuman Primates. This session is jointly sponsored by ASP and the Association of Primate Veterinarians, and marks the beginning a new tradition of collaboration between these two groups that we hope to continue. After the success of last year’s workshop geared toward career planning, **Lynne Miller** and the ASP Education committee will present a roundtable discussion on “Preparing for life after graduate school.” The discussion will provide a forum to discuss career options for those with degrees in primate-related fields. **Allyson Bennett** has also organized a roundtable discussion on “Current studies and future directions for behavioral genetics research in nonhuman primate populations” to discuss current research projects from groups investigating behavioral genetics, along with conceptual and practical considerations. Finally, **Sian Evans** has organized a roundtable on “Primates and Public Health” which should facilitate some important discussion on issues related to contagious diseases and human interactions with nonhuman primates.

We will also be treated to a “Macaque film session” that **Charles Weisbard** and **Charles Southwick** have planned, which will emphasize scientifically oriented films about lesser known macaques. In addition to all of this, we will have many sessions composed of individually submitted abstracts that will suit all of your tastes.

The program volume of the *American Journal of Primatology* will be sent to all subscribers by late May, so you should get it in plenty of time to review before you come to the meeting. – *Mollie Bloomsmith, ASP Program Committee Chair.*

Local Arrangements Committee Promises Rocky Mountain Fun

(continued from page one)

have a wet spring they can be breathtaking. Rocky Mountain National Park is only an hour drive from Boulder.

Remember that Boulder is at 5,250 feet altitude so take it easy for the first 24 hours after you arrive. Alcohol effects are also enhanced as a result. Altitude sickness is generally associated with fatigue, nausea, headaches, frequent awakenings when you sleep, and excess GI gas! One of the simplest ways to combat the effects of altitude is to drink plenty of water during your stay in Colorado.

The Regal Harvest House is a top-notch meeting site. There are 14 tennis courts, an indoor and outdoor pool, a small fitness facil-

ity, and a Jacuzzi. The Harvest house has bike, tennis racket, and roller blade rentals available on site. There is an auto rental office at the hotel. The hotel has a shuttle van for local trips. You can schedule it in advance free of charge with the bell desk (but please tip the Bellman!) for local sight seeing. However, the Pearl Street Mall, where there are lots of really good restaurants, is a \$4.00 cab fare at best. Boulder is a sport and health conscious community and smoking is not allowed in any public facility, including bars!

The local planning committee will do all we can to make this a special event for ASP members and guests. – *Mark Laudenslager, ASP Local Arrangements Committee Chair*

Trea\$ury Note\$

ASP Membership Renewals for calendar year 2000 are in progress. Remember: Regular (\$82) and Student (\$51) memberships in ASP now include a one-year subscription to the *American Journal of Primatology*. Please note that if you renew or join for 2000, you will receive all 13 issues of *AJP* for calendar year 2000, no matter when you join. However, also note that it takes the publisher 6-8 weeks to start your subscription. So if you renew on April 1, you may not receive any *AJPs* until June 1. If you have not received any *AJPs* 8 weeks after renewing, please contact me and I will bring it up with the publisher.

A renewal notice is included with this issue of the *Bulletin* (page 15). As usual, you can also join IPS, contribute to the ASP Conservation Fund, and help offset credit card fees on the form. Alternatively, you can renew at the website using your credit card. You can also register at the website for the ASP meeting, June 21-24, 2000 in Boulder.

The Membership and Finance Committee will be addressing a number of topics related to the merging of ASP dues and *AJP* subscriptions at the upcoming meeting in Boulder. If there are any issues that you feel we should discuss, please let me know at your earliest convenience. – *Steve Schapiro, ASP Treasurer, sschapiro@mdanderson.org*

AJP's Changes Its Instructions for Contributors

The Editorial Board of the *American Journal of Primatology* values submitted manuscripts and wishes to give each the timely consideration that it merits. Therefore, please note the following to avoid any unnecessary delays in processing your contribution to the journal. The Instructions for Contributors now presents specific guidelines to assist in presenting your contribution in a context that clearly demonstrates its relevance to the journal’s mission. In addition, with the exception of media reviews, all submissions should now be submitted for consideration as either a Review Article or a Research Article reporting original data. In limited instances, original data may be considered for a Brief Report; Brief Reports now have a firm page limit of 12 pages for the entire manuscript. Of course, we still welcome contributions emphasizing either theory or application. Finally, please note that manuscripts must no longer include a separate Conclusion section. We look forward to your continued support of the journal. – *Mike Andrews, Editor, American Journal of Primatology.*

Call for ASP Small Grant Applications

The Research and Development Committee is inviting applications for ASP General Small Grants. Grant awards range from \$500 to \$1500, and will be for a period of one year. Preference will be given to training initiatives, start-up funds, supplementary funding for students, and innovations in animal care and research technology. The application deadline is **May 19, 2000**; proposals will be reviewed at the ASP meeting in Boulder and award recommendations made to the Board of Directors at that time.

Proposal information is available on the ASP website at <http://www.asp.org/research/>, or contact Kathryn Rasmussen, NIH Animal Center Bldg. 112, P.O. Box 529, Poolesville, MD 20837; Tel.: (301) 496-0444; E-mail: klr@helix.nih.gov. - *Kathy Rasmussen, ASP Research & Development Committee Chair*

Is There "Life After Graduate School"?

At the coming meetings, the Education Committee will again sponsor a roundtable discussion on Preparing for Life After Graduate School. Last year's session focused primarily on finding and preparing for jobs outside of academia. Because it was so well received, we have decided to repeat the event. However, this year we will expand to include searching and applying for academic positions. We encourage the participation of our entire community, including faculty members, students, and those with other affiliations. The time and place for this event have not yet been scheduled; we will announce this in the next bulletin. - *Lynne Miller, ASP Education Committee, Chair*

See the Education Committee's document on poster presentations at: http://www.asp.org/education/howto_onPosters.html

ASP Commemorative T-Shirts Available



All cotton T-shirts will be available at the Boulder meeting. To get the maximal resolution for the drawing, the color of the shirt has been changed. The T-shirt, a Hanes "Beefy T", will be white with red lettering. The logo will be printed on the back (large in center) and on the front (small on the upper left side). Pre-order yours on the registration form, if possible. (Only a limited number will be available on site.) Sizes are small, medium, large, x-large, and xx-large. Shirts are \$16 each.

F

Update for the ASP Meeting New Orleans:

According to Margie Clarke, 1999 Local Arrangements Chair, the final count for last year's ASP meeting may have set a record.

There were 396 individuals registered, including guests and partial registrants, with 377 in attendance.

GGGGGG



Election 2000

The leadership of ASP in the near future will be determined in part by the outcome of the next election. You should have, or will soon have, a copy of the ballot. The Nominations Committee, composed of Melinda Novak (Chair), Chris Abee, Paul Houghton, Susan Perry, and Anne Savage, put together a slate of excellent candidates for all three offices. The nominees are: Steve Schapiro and Jeff French for President-elect; Bill Roudebush and Dee Higley for Treasurer; and Leanne Nash and Janette Wallis for Executive Secretary.

If you are an eligible voter (all full and retired members), I ask you to take seriously your voting privilege and cast your ballot. - *Nancy Caine, ASP President*.

Second Notice

Call for Award Nominations

On behalf of the ASP the Awards and Recognition Committee is soliciting nominations for three awards for members consideration:

1.) Distinguished Primatologist Award

This award honors a primatologist who has had an outstanding career and made significant contributions the field. There have been five previous individuals presented this most prestigious honor by the Society. The recipient of this years' award will be invited to deliver the Distinguished Primatologist Address (Featured Speaker) to the Society at the 2001 meeting. Nominations should be in writing and must include a vitae and a narrative that describes the nature and extent of the nominee's contribution to primatology. Nominations must also include at least two letters of support submitted on behalf of the nominee.

2.) Distinguished Service Award

This award is not presented on a regular basis but is presented to deserving individuals who have contributed long-time service to the Society. Nominations should include at least one letter of support in addition to the nomination letter describing the individuals' contributions.

3.) Senior Research Award

This is a new award and replaces the Sr. Biology and Conservation award formerly

administered by the Conservation Committee. This award honors individuals who, because of their dedication to their profession and their productivity, have made significant contributions to research activities supporting or enhancing knowledge concerning issues relevant to primatology. Such contributions could take place in laboratories, the field, or in zoological gardens. The award is reserved for those who have not received the highest degree describing excellence offered in their field (e.g., Ph.D., M.D., D.V.M.) but are deserving of the Society's recognition for their achievements. Nominations should include a nominating letter and two supporting letters indicating the contributions of the individual along with narrative indicating impact on the field. Nominees need not be a member of the ASP to be considered.

Nominations for any of the three awards must be received by **May 25, 2000**. Awards will be announced at the meeting in Boulder, CO. - *Gerald C. Ruppenthal, Chair, Awards and Recognition Committee, CHDD Box 357920, University of Washington, Seattle, WA 98195; Tel.: (206) 543-3707; E-mail address: gerry@u.washington.edu; Fax: (206) 616-9774.*

[see <http://www.asp.org/Awards/RequestAwardNominations2000.html>]

Bulletin Board

Formation of an Association of Primate Sanctuaries and Refuges

At the International Primate Sanctuary Panama we have often felt the need to communicate with fellow sanctuaries about policies, management and care of our primates. There is not yet an extensive literature on care and rehabilitation of previously captive primates. In addition, this specialized area of knowledge does not yet have a journal or journals devoted primarily to this topic. At this stage in the development of sanctuaries an exchange of information could therefore be beneficial for the primates for whom we care. Also the shared knowledge will allow us to enhance the professional care on primates at the sanctuaries and refuges and to train future workers. These are some of the many reasons why we feel that an association of primate sanctuaries and refuges would contribute to the conservation and care of nonhuman primates.

Our initial step toward the development of an association has been to form an Egroup, an e-mail mailing list, on primate sanctuaries in order to communicate about primate sanctuaries. Hopefully as many primatologists as possible can join our discussions on this topic, so please feel free to contact us or to join our Egroup at the address below. Also we hope to reach more primate sanctuaries in order to put them on our list. If anyone knows a sanctuary or refuge that is not listed on our web page, we would be delighted to hear from you so we can add the sanctuary or refuge to the address.

Eventually we would like to have an association of primate sanctuaries and refuges, the Egroup will at that time be connected to the association as a discussion group. In the future annual meetings held as satellite meetings to extant primate societies and publications may

further enhance our ability to care for primates. We invite people who work with primates to join our group and share their ideas with us. When you join, introduce yourself in the Egroup and tell us about your work and experiences concerning primates. If you require any more information or would like to join the egroup, Marieke Kremers will be handling the correspondence and lists for the next 3 months as part of her traineeship in wildlife management at the Van Hall Institute in Holland.

If you have any questions, please contact Marieke at the following e-mail address: ips_panama@yahoo.com. The Egroup address is: sanctuaries_for_primates@egroups.com.

If you would like to have more information on the IPSP visit our website: <http://fsu.edu/~cpanama/ipsps> or contact the director, Dennis Rasmussen at: islatigre@hotmail.com

The Journal of Comparative Psychology Calls for New Reviewers

The *Journal of Comparative Psychology* publishes original empirical and theoretical research from a comparative perspective on the behavior, cognition, perception, and social relationships of diverse species. Studies can be descriptive or experimental and can be conducted in the field or in captivity. Papers in areas such as behavioral genetics, behavioral rhythms, communication, comparative cognition, behavioral biology of conservation and animal welfare, development, endocrine-behavior interactions, evolutionary psychology,

methodology, phylogenetic comparisons, orientation and navigation, sensory and perceptual processes, social behavior, and social cognition are especially welcome. Both regular articles and brief communications will be considered. If you are interested in becoming a reviewer, please contact Susan U. Linville, Assistant Editor at: *Journal of Comparative Psychology*, Department of Psychology, Indiana University, 1101 East 10th St, Bloomington, IN 47405; Tel.: 812-855-5014; E-mail: compare@indiana.edu.

Animal Behavior Society Seeks Book List

Are you an author or editor of a book related to animal behavior? If so, we would like to list it on the ABS Outstanding Members web page (http://www.animalbehavior.org/ABS/Stars/Books/abs_books_display.phtml). Listing your book is quick and easy! And remember, if the book is still available for purchase, there is a direct link to Amazon.com from the ABS web site for interested buyers (and ABS earns up to 5% from purchases made through this link). Send the following informa-

tion to Jill Mateo (jmm52@cornell.edu): Author name(s), book title, publication year, publisher, number of pages, ISBN number (specify whether for hardcover or paperback), and a brief abstract of the book. - *Jill M. Mateo, Ph.D., Animal Behavior Society Public Affairs Committee, Psychology Department, Uris Hall, Cornell University, Ithaca NY 14853-7601; E-mail: jmm52@cornell.edu; Tel.: (607) 255-3996; Fax: (607) 255-8433.*

Laboratory Primate Newsletter moves to a New Web Server

Our list, LPN-L, the e-mail edition of the *Laboratory Primate Newsletter*, has been moved to a new server here at Brown. LPN-L had been hosted on <brownvm.brown.edu>, and is now hosted on <listserv.brown.edu>. As long as you just receive our mailings, this should make no difference to you, but if you want to change your subscription in any way, including quitting, you will have to send the commands to <LISTSERV@BROWN.EDU>. We are told that there will soon be a Web interface for the LPN-L archives, but that is not very interesting to us, because there are more back issues in our own Web site <www.brown.edu/Research/Primate/back.html> than there are in the LPN-L archives.

If you have any questions, write to us at <primate@brown.edu>. *Judith E. Schrier, Editor Laboratory Primate Newsletter, PRIMATE@BROWN.EDU Box 1853, Psychology Department, Brown University, Providence, RI 02912; Tel.: (401) 863-2511; Fax: (401) 863-1300; On the WWW: <http://www.brown.edu/Research/Primate/>*

Current Primate References to Cease Publication

We must announce - sadly - that the December 1999 issue of Current Primate References is the final issue. Current Primate References has helped researchers stay abreast of new publications since its inception in the 1960s under Maryeva Terry, first as a mimeographed newsletter and then later as a fully developed journal.

The Primate Information Center no longer has the resources to continue publishing paper bibliographic products, and products tailored to individual researcher requests. However, we are exploring options to make an equivalent to Current Primate References available on the Web, along with improving Web access to our online database. We hope to realize this goal in the year 2000.

Thanks are due to the Washington Regional Primate Research Center, University of Washington Health Sciences Libraries, and NIH/NCRR for sponsorship of the Primate Information Center.

Until the proposed new Web access becomes available, everyone is invited to get free password access to our current Web database by emailing requests to pic@u.washington.edu (indicate password request in the subject line & list your name/affiliation in the message).

Rather than this being a final goodbye message, we hope it is simply a temporary pause until we are reincarnated electronically!

- Jackie Pritchard, Manager, PIC,
pic@u.washington.edu; Chico Otsuka-Gooding, CPR Managing Editor

Primate Enrichment Bibliography Available

There were more requests for the Third Edition of the Primate Enrichment BIBLIOGRAPHY than expected. We have therefore decided to make this document also accessible on the Internet. It includes a table of contents with quick links to the various chapters and sections. If you wish, you can print the whole BIBLIOGRAPHY directly at your office.

You will find the BIBLIOGRAPHY at the original site: http://www.animalwelfare.com/Lab_animals/biblio/index.html

While the bibliography lists only about 400 references, all of which are of specific practical relevance, the Primate Enrichment DATABASE covers all published material on the topic of primate environmental enrichment. Unlike the

bibliography, the DATABASE allows you to search for more than 300 different keywords, for journals, titles, and authors. We made the most recent update on February 6, 2000. There are 1524 entries; 244 of them are full text, which means that you can access and print the original articles at your office. You will find the DATABASE at the following web site: http://www.animalwelfare.com/Lab_animals/biblio/enrich.htm

It is our hope that both documents are helpful resources in our common endeavor to make life easier and better for laboratory primates. *With kind regards, Viktor & Annie Reinhardt, viktor@animalwelfare.com, afreinha@facstaff.wisc.edu.*

PIC & P-S Offer Literature Search of Current Topics in Primatology

In cooperation with the Washington Regional Primate Research Center, Primate-Science offers bi-monthly searches of recent literature on a range of nonhuman primate topics. The source for these searches is the Primates database of the Primate Information Center, part of the Washington Regional Primate Research Center and the University of Washington Health Science Libraries, Seattle, Washington. If you would like to be able to access this database, see the instructions on this page.

Suggestions for topics for this series should be sent to Jackie Pritchard, Primate Information Center Manager, pic@u.washington.edu or Larry Jacobsen, Primate Info Net Coordinator, jacobsen@primate.wisc.edu.

Topics currently available in this Series can be found at: <http://www.primat.wisc.edu/pin/topics/> Topics include:

Stress and Nonhuman Primates
Culture and Culture Spread
Primate Brain Evolution
DNA Fingerprinting in Nonhuman Primates
Herpes B Virus
Mate Choice in Nonhuman Primates
Lentivirus Vaccine Research
Cognition Studies (includ. tool use and language)
Preservation Management & Genetic Breeding
Mother-Infant Interactions
Male-Infant Interactions
Infanticide
Ketamine
Alloparenting, adoption, foster mothering
Conservation of Malagasy Primates
Seed Dispersal
Diet and Nutrition in Captive Macaques
Play in Nonhuman Primates

PSGB Moves to New URL

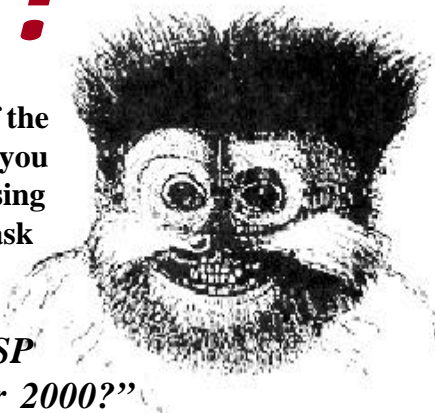
The Primate Society of Great Britain's website has moved to a new URL. You can now access it at: <http://www.psgb.org>. The site has been redesigned so it should be a little easier to get around, but please let me know if there are any problems. It contains information about the society and the various meetings we organise. There are also new application forms for the PSGB conservation grants and other bits of information. If you have links to the old web site, you will get a redirection page for the next few months, but the old web site will be going out of commission sometime next year. - Dr. Bill Sellers, Bill.Sellers@ed.ac.uk; Editor of Primate Eye and the PSGB website: <http://www.psgb.org/>

Yikes!

This could be the last copy of the *ASP Bulletin* you receive! If you can't bear the thought of missing out on ASP news, you must ask yourself this question:

"Have I renewed my ASP membership for 2000?"

If the answer is "no", please fill out the renewal form on page 15 TODAY. You can also renew your membership via the ASP website (www.asp.org)



Student Research and Education Opportunities Summer 2000

The Education Committee of the American Society of Primatologists is pleased to announce the following summer research internships and educational opportunities for students. There are a variety of experiences, ranging from field research to internships in zoos. Be advised that ASP cannot offer endorsement of any of the opportunities listed below because we do not know the specific details of each position. We encourage students to investigate carefully the educational or research opportunity before applying to ensure they meet with your goals and expectations. Read carefully as some of the opportunities require that you pay money, whereas some are paid.

- Colleen Schaffner, ASP Education Committee

Internships

Behavioral Research Internship Primate Foundation of Arizona.

The Behavioral Research Internship is on a volunteer basis, provides no stipend, and is designed to give college students in the behavioral and biological sciences the opportunity for research experience. It includes three basic components: 1) an introduction to chimpanzee (*Pan troglodytes*) behavior and behavioral observation data collection, (2) chimpanzee psychological wellness program and environmental enrichment training, and (3) research support tasks such as data entry. The introduction to chimpanzee behavioral observation is the primary component of the internship and includes data collection on an assigned project, entering the data into a spreadsheet program, conducting preliminary analysis and completion of a background literature review. Results of the intern project are presented at the end of the internship to the full staff to provide presentation experience.

The internship program is open to undergraduate and graduate students. Undergraduate students should have completed two years of college including an upper division primate behavior course. Previous course work and experience in primatology or animal behavior (or both) is required for all students.

Internships are offered three times across the calendar year and each is three months in duration. The Summer Internship begins June 1, 2000 until August 31, 2000. The Fall Internship begins September 1, 2000 until November 28, and the Spring Internship begins March 1, 2001 until May 30, 2001. **The deadline for the Summer Internship is April 15, 2000; the deadline for the Fall Internship is July 15, 2000 and the deadline for the Spring Internship is January 15, 2001.** Applications should include a formal letter of interest, two letters of recommendation, and an unofficial copy of college transcripts.

Contact: Sue Howell, Research Director, Primate Foundation of Arizona, P. O. Box 20057, Mesa, Arizona 85277-0027; Tel. Relay: 1-800-842-4681 then (480) 832-3780; Fax: (480) 830-7039; E-mail: suehpfa@uswest.net.

Field Internship in Behavior, Education and Conservation of Wild Gibbons. The Kalaweit program for gibbon rehabilitation is a position in which participants receive status as a member of the Etho-passion society; the position will require participants to pay a one time \$350.00 fee to cover expenses once on site for two months. The Kalaweit Program of the Etho-Passion Society (French Society of Conservation) in the Bukit Baka Bukit Raya National Park in Kalimantan (Indonesia) is the first conservation program for the Kalimantan Gibbons. The program includes rehabilitation of gibbons, collection of data about the diet and ranging patterns of wild gibbons and an education program designed to educate people that live regionally about conservation and the need to protect the National Parks.



The program is open to individuals majoring in or holding a degree in biology, zoology or psychology. In addition, participants should have the ability to adapt to varied conditions, as they will be living at a field station in the forest. The fee of \$350.00 will include room and board and travel expenses AFTER arriving in Indonesia.

For more information or to apply to the program contact, Program Director : Mr. Aurelien Brule (Chanee), Kalaweit Program, Kalimantan Gibbons Rehabilitation Program Research Station and Conservation Education Center; Jl Demang Salilah I N 11, Komplek Unpar, Palangka Raya, Kalteng, Indonesia; E-mail: kalaweit@hotmail.com; Web Site :<http://perso.wanadoo.fr/thierry.destenay/Appli%20Kalaweit/>

Summer 2000 Research Internship, Los Angeles Zoo. The internship is a paid position and provides interns with the opportunity for behavioral research experience with primates in a zoo setting. Interns will assist in observational research at the Los Angeles Zoo. Studies that will be underway during the summer include: 1) evaluating the effects of transferring a group of orangutans into the newly designed "Red Apes of the Rain Forest" habitat, which provides substantially greater opportunities for brachiation and arboreal feeding activity, utilization of the exhibit and various forms of enrichment; 2) documenting the form of interactions between orangutans and zoo visitors and assessing the effects of exhibit design on such interactions; 3) assessing differences in the affect and judgments embedded in comments made by zoo visitors viewing orangutans in their 'old' and 'new' exhibits; and 4) documenting changes in behavior shown by a group of drills with changes in group membership.

More specifically, research intern duties include collecting quantitative data, entering the data into a Tandy 102 portable computer, transferring the data to a PC, carefully checking the transferred data for accuracy, and making descriptive entries into observer log books. The research intern will participate in bi-weekly research staff meetings where research design and research protocol are discussed and may also become involved in a variety of short-term projects involving other mammals and/or birds.

Applicants must be upper division college students or recent graduates with strong interests in primatology, animal behavior, and/or conservation biology. Previous experience in observational research is desirable but not required if applicant is perceptive, careful, consistent, patient and reliable.

To apply for a research internship send a statement describing your background, research interests and future plans by **April 15, 2000**. Include your resume as well as a copy of your transcripts** (need not be stamped by your university) and the names, E-mail addresses and phone numbers of three references who may be contacted. The internship provides a stipend of \$1500.00 over an eight week period with the expectation that the intern will work for a minimum of 30 hours per week. Successful applicants could begin their appointment any time in June 2000.

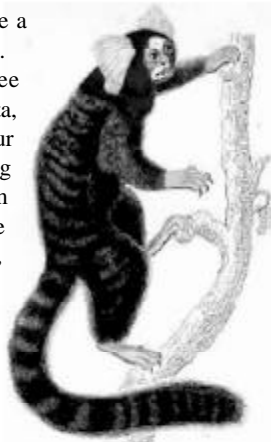
For further information or to apply for the program contact Cathleen R. Cox, Ph.D., Los Angeles Zoo, 5333 Zoo Drive, Los Angeles, CA. 90027 U.S.A. Tel.: (323) 644-4204; Fax: (323) 662-9786; E-mail: coxbain@loop.com.

***Note:** if your university does not evaluate academic performance on the 5 point scale (A, B, C, D, F) most commonly utilized in North America, enclose a statement from your university that tells how the grades shown on your transcripts would be evaluated on the 5 point scale where A/Excellent = 4.0, B/Above Average = 3.0, C/Average = 2.0, D/Below Average = 1.0, F/Fail = 0.0.

Golden Lion Tamarin Intern Program Zoo Atlanta. The internship is on a volunteer basis and offers experience in animal behavior research, data entry, volunteer management, and journalism. This experience will include: observing and documenting the behavior of a family of golden lion tamarins that are in a limited free ranging exhibit; coordinating volunteers; acting as a liaison with the public and participating in the production of a weekly newsletter about the golden lion tamarins.

This is a three-month, summer internship position. The position requires 20 hours of work per week. Candidates must submit a letter, with resume and three references (2 school, 1 work). Applicants must have completed at least two years of college in a related field such as biology, zoology, or psychology. All interns must have a current negative TB test (within the past six months).

To apply send a cover letter, resume and three references to Gail Allen, Human Resources, Zoo Atlanta, 800 Cherokee Ave. SE, Atlanta GA 30315-1440. In your letter, directly state that you are interested in applying for the Golden Lion Tamarin Conservation Program Internship. If you have specific questions or desire more information contact Sarah M. Bexell, Zoo Atlanta, Field Conservation Technician and Education Liaison; Gltamarin@mindspring.com.



Educational Opportunities

Primate Behavior and Ecology Program. Florida State University-Panama is offering a 4-week, 7 semester-hour Primate Behavior and Ecology Program this summer from June 23 to July 22, 2000. As a part of the training, students will conduct directed research projects on the endangered Panamanian tamarin (*Saguinus geoffroyi*) and live at the International Primate Sanctuary of Panama. The primate sanctuary is located on the Atlantic side of Panama in the Tiger Islands. These islands are the tops of mountains that were flooded by the creation of the Panama Canal. The program includes courses in primatology and research design.

Students will collect data on tamarin groups in teams of three for four to six hours every day. The teams will relay each other so that data are collected on tamarin monkey groups from 6 am to 6 pm, six days each week. A teaching assistant will lead each team.

The cost of the program is \$2540. This price includes tuition, books, food and lodging, and travel within Panama. Students attending must provide their own transportation to Panama. Applicants must have 3 letters of recommendation. These letters should address the ability of the student to live in a field situation and cooperate with other students as well as the student's academic abilities. Ideally professors who have worked extensively with the students during field trips as well as in the classroom should write the letters.

For information about admission to the Primate Behavior and Ecology Program, contact Dr. Dennis R. Rasmussen, Ph.D. Florida State University-Panama Canal College Branch, Professor and Director of the International Primate Sanctuary of Panama, E-mail addresses:

islatigre@hotmail.com, islatigre@yahoo.com, or drasmuss@mailers.fsu.edu; web site: <http://www.fsu.edu/Panama/ipsp> Phones: 011-507-272-1572; 011-507-272-1573; 011-507-272-1574. All students enrolled in this program will be admitted as students to the FSU-Panama branch. Applicants must therefore fill out our standard application form. The letters of recommendation and application forms should be sent to: College Programs, Primate Behavior and Ecology Program, 5100A University Center, The Florida State University, Tallahassee, Florida 32306-2421. If you need to get in touch via phone, please call Rita Wright at: (850) 644-3505.

Field Work Course in Animal Behavior, Zoo Atlanta/Georgia Tech. A four-week field course in animal behavior will be offered for summer 2000 by the School of Psychology at the Georgia Institute of Technology and Zoo Atlanta. This intensive course takes place at Zoo Atlanta and at field sites in Kenya and is designed to teach students how to conduct behavioral observations in a field setting. As the priority of the course is to develop the observational skills of students, the focus is on observational data collection. In Atlanta, students are taught data collection methods and the behavior of East African mammals from a variety of zoo, academic, and field scientists. Students then use this information in Africa to conduct daily observations on a variety of species. Observations are conducted in both national parks and private reserves, which permits students to compare the behavior of a single species across settings. Daily observations are supplemented by readings, discussions, and lectures by field scientists. The course also places a strong emphasis on conservation, and students read and discuss many of the issues related to conservation in Kenya. Recommended prerequisite courses: Introductory psychology or biology, animal behavior. Approximate course cost: \$6,000 (subject to change). Course dates: June 27-July 21, 2000. Application Deadline: **March 15, 2000.** Contact: Tara Stoinski, Zoo Atlanta, 800 Cherokee Avenue, Atlanta, GA USA 30315; Tel.: (404) 624-5826; Fax: (404) 624-5684; E-mail: stoinskit@mindspring.com.

Field Methods Course in Primate Ecology. The University of Colorado at Boulder offers you the opportunity to study tropical primate ecology in western Panama with Professor Michelle Sauter, University of Colorado professor of Anthropology. You will be exposed to important issues in primate ecology and trained in primate field techniques. The program will be housed at the Bocas del Toro Biological Station operated by the Institute for Tropical Ecology and Conservation (ITEC). The field station is on the beach between tropical rainforests and coral reefs on the Caribbean side of Panama within the Bocas del Toro Archipelago. Primate species on the island include brown howling monkeys, white-faced capuchins, and owl monkeys. The centerpiece of the program is a six-credit Anthropology course, Field Methods in Primate Ecology (ANTH 4360/5360). The course is divided into five emphases: formal classroom lectures, informal field lectures, readings and critiques, group projects, and an individual field research project. The four field projects are habitat profiles, plant phenology and productivity, primate census and demography, and primate observation techniques. With the help of the program director, you will develop and carry out your own field research project. For further information, see: <http://www.Colorado.EDU/OIE/StudyAbroad/brochures/Panama.html> or contact the CU-Boulder Study Abroad Programs office at (303) 492-7741 or Professor Sauter in Anthropology at (303) 492-1712.

Remember to see pages 9-11 for employment or volunteer opportunities not limited to Summer 2000

Conservation Conversation



Call for Conservation Award Nominations and Grant Applications

Nominations for Conservation Awards and Grants are now being sought by the American Society of Primatologists (ASP). These awards and grants, funded from the ASP Conservation Fund, are a mechanism to recognize deserving colleagues and students, including those from primate habitat countries – countries with native primate fauna – for whom the prestige of an ASP award or grant can be a valuable aid to the recipient’s conservation efforts.

Subscription Award: This award provides the *American Journal of Primatology* to worthy individuals in habitat countries who otherwise would have little access to the scientific literature on nonhuman primates. Preference is given to individuals who will make the journal available for use by students and colleagues. The award is normally granted for a 5-year period. Recipients are requested to submit a brief report every two years summarizing the use of the journal. A nominating letter should describe the nominee’s credentials and primate-related activities, and explain why the nominee deserves to receive high priority consideration.

Conservation Award (\$750): This award provides recognition and financial support for students and young investigators from habitat

countries who demonstrate potential for making significant and continuing contributions to primate conservation. Those eligible include students, researchers, and educators from primate habitat countries for whom no more than five years have elapsed since receipt of their terminal degree. Nominators should provide the name, title and full mailing address of their nominee, along with a statement about the nominee’s qualifications for the award, focusing on past and potential contributions to primate conservation. A copy of the nominee’s vita is requested. Supporting letters from other individuals acquainted with the nominee’s work may be submitted. Past awards have been presented by U.S. Ambassadors or other senior officials, thereby obtaining favorable publicity for the award, its recipient, and primate conservation in the recipient’s country.

Conservation Small Grants (up to \$1,500): Grant proposals are solicited for conservation research or related projects, including conservation education. ASP and IPS members working in habitat countries are especially urged to apply or to help someone from a habitat country submit a meaningful project which can be a portion of a larger ef-

fort. Grant applications may be obtained by contacting the ASP Conservation Committee Chair at the address below or from the conservation section on the ASP web page (www.asp.org). Recipients of grants must agree to submit a brief report (maximum 1 page, single spaced), in a form suitable for publication in the *ASP Bulletin*, to the chair of the ASP Conservation Committee within 6 months of completion of the project.

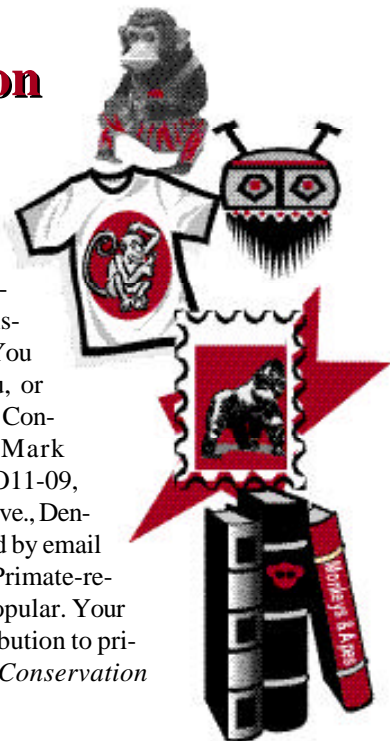
Evaluation and Application Procedure: With the exception of requests for emergency support, which can be considered at any time, the Conservation Committee will make its recommendations for awards and grants to the ASP Board of Directors at the annual meeting. Successful nominees and applicants will be informed following the meeting and their names will be published in the *ASP Bulletin* and posted on the ASP web page. The **2000 deadline** for submission of nominations and grant proposals is **May 19**. All materials should be mailed or faxed (206-685-0305) to Randall C. Kyes, Chair, ASP Conservation Committee, Regional Primate Research Center, Univ. of Washington, Box 357330, Seattle, WA 98195 - *Randy Kyes, Conservation Committee Chair*

Memorial Contributions in Memory of Ray Rhine

We wish to extend our sincere appreciation and thanks to Mrs. Doris Rhine and her family for requesting that contributions in Ray’s memory be made to the American Society of Primatologists’ Conservation Fund. To date, we have received close to \$3000 in memory of Ray and his commitment to the conservation of primates. We thank all who have contributed so generously. These contributions will go a long way in helping ASP support the conservation initiatives that Ray worked so hard to promote.

ASP Conservation Auction

The Conservation Committee will hold its annual Conservation Silent Auction at the ASP meeting in June. This auction has become an anticipated event and an important fund-raising activity for primate conservation. You may bring items to donate with you, or you can send them in advance to: ASP Conservation Auction, c/o Dr. Mark Laudenslager, Dept. of Psychiatry AO11-09, Univ. of Colorado HSC, 4455 E. 12th Ave., Denver, CO 80220 (Mark can be contacted by email at: mark.laudenslager@uchsc.edu). Primate-related items, crafts, and artwork are popular. Your contribution to the auction is a contribution to primate conservation. -*Randy Kyes, Conservation Committee Chair.*



Employment Opportunities in Primatology and Related Fields

Behavioral Endocrinologist, Chicago Zoological Society - Brookfield Zoo. The Chicago Zoological Society seeks to hire a Ph.D. level endocrinologist to develop and direct its Behavioral Endocrinology program. A research emphasis on the effects of hormones on behavior and the behavioral ecology of stress, at the level of whole organisms, is required. May have specialized emphasis in birds, herps, or mammals, but broadly trained or experienced in multiple taxa. Demonstrated experience in field research is preferred. The successful applicant will be expected to (1) establish a laboratory program and seek funding through grants or development opportunities, (2) develop primary research program and secondary service program for the lab, (3) collaborate with senior scientific staff to identify, design, and implement endocrine studies to advance the zoo's animal husbandry, captive breeding, and field conservation programs, and (4) be responsible for curating, planning, and directing a portion of the zoo's animal collection. Send CV, statement of research interest, and three letters of recommendation to: Brookfield Zoo, Chair—Animal Collection Division, 3300 Golf Road, Brookfield, IL 60513. **Closing date: 15 March.** Contact: Carol McCarthy, Administrative Program Manager, Animal Collection Division; 708-485-0263, x374; E-mail: camccart@brookfieldzoo.org.

Behavioral Ecology/Conservation Biology, Ohio State University. The Department of Evolution, Ecology and Organismal Biology seeks a behavioral ecologist with a strong interest in conservation biology for a tenured or tenure-eligible appointment at the associate or assistant professor level. The successful candidate is expected to maintain a vigorous, extramurally-funded research program involving molecular approaches to the study of the evolution and ecology of behavior. It is also expected that this person use the results of such research to address problems in conservation biology. Teaching responsibilities will include participation in undergraduate core sequences in ecology and evolutionary biology and a graduate level course in the candidate's area of expertise. Candidates must have an earned Ph.D. in an appropriate area of biological sciences, postdoctoral research experience, and a record of significant research accomplishments. The position is available October 1, 2000. Application materials should include a current CV, statements of research interests and teaching philosophy, reprints of recent research, and the names and addresses (including e-mail) of three references. **Review of applications will begin on March 10 and will continue until a suitable candidate is identified.** Send to Professor Allison A. Snow, Chair, Behavioral Ecology Search Committee, Department of

Evolution, Ecology, and Organismal Biology, 1735 Neil Avenue, Columbus, OH 43210; <http://blb.biosci.ohio-state.edu/nelson.html>

Teaching and Research Opportunities in the Neotropical Forests of Nicaragua and Costa Rica. La Suerte Biological Research Station, Costa Rica and Ometepe Biological Research Station, Nicaragua offers teaching and research opportunities for University professors committed to tropical forest conservation, education, and the study of animal and plant interactions. We have openings for qualified Ph.D.s to teach college level courses in ecology, biology, primatology, botany, ornithology, animal behavior, herpetology, and related fields during winter break, spring break, and over the summer. Courses are generally 26 days in length during the summer and 23 days in length during the winter break. Courses can be designed to utilize both our Costa Rican and Nicaraguan field sites, or to concentrate all activities at one of the field sites. La Suerte and Ometepe Biological Field Stations provides transportation for the professor from the US or Canada to Central America, and free lodging at the field station for the professor and his/her family members. Professors are provided with a salary, equipment budget, and a graduate teaching assistant (depending on enrollment). If you are interested in teaching one of our existing courses (see our website for more detailed information on courses <http://www.studyabroad.com/lasuerte>) or developing a new course, please provide us with a course description, course objectives, and your curriculum vitae. **Deadline July 1, 2000.** For information, contact: Alvaro Molina; <http://www.studyabroad.com/lasuerte>; E-mail: lasuerte@safari.net; Ometepe Biological Field Station (Nicaragua), La Suerte Biological Field Station (Costa Rica).

Conservation Courses

"Recent Advances in Conservation Genetics." August 14 -27, 2000, Smithsonian Institution's Conservation and Research Center in Front Royal, Virginia, outside Washington, DC. This is a 13-day intensive course in methods, applications and interpretation of molecular genetic analyses of endangered species. Learn from recognized experts how to develop and interpret a wide range of genetic data using real examples, laboratory demonstrations and a variety of computer programs. Tuition: US\$2,000 (includes housing meals at the CRC Conference Center and ground transportation to/from Dulles International Airport). We welcome applications from conservation-minded scientists of any nationality (advanced graduate students, post-docs, teachers, and researchers with advanced degrees) from academics, government, NGOs, or industry who are studying the genetics of endangered species and who will apply the knowledge gained from this course to the conservation of such species. Deadline for receipt of applications: **April 14, 2000.** Participants in this course will be limited to 25. Limited financial aid is available. - *Jan Martenson, course coordinator, Laboratory of Genomic Diversity, NCI/FCRDC, Bldg.*

560, Room 11-65 Frederick, MD 21702-1201; E-mail: noahscrc@ncifcrf.gov; Tel.: (301) 846-1296; Fax: (301) 846-6327; web site <http://lgd.nci.nih.gov>.

Masters Course in Primate Conservation.

Oxford Brookes University is planning a Masters Course in Primate Conservation to begin in September 2000. This one-year Master of Science course combines the expertise of anthropologists and biologists to examine primate conservation biology in a broad context, with particular emphasis on the interrelationships between humans and wildlife in forest and woodland environments. Topics include: Primate diversity and biogeography; Socio-political aspects of conservation; Conservation education; Primate conservation genetics; Habitat protection and sustainable use; Fieldwork training and methodology; Museum studies; Primates in captivity. Contact Prof. Simon Bearder or reply directly to: hlantsbur-@brookes.ac.uk, Simon Bearder, School of Social Sciences and Law, Oxford Brookes University, Oxford OX3 0BP, Tel. 01865 483760 (work), 01869 252082; Fax: 01869 483937 (work), 01869 247050 (home); E-mail: skbearde-@brookes.ac.uk.

Postdoctoral Research Associate, Wake Forest University School of Medicine. The research uses both mice and monkeys and is focused on issues of post-menopausal women's health. Most projects involve the potential health benefits of soy and soy phytoestrogens. Applicants should hold either the Ph.D., D.V.M. or M.D. degrees. Relevant training and experience might include nutrition, reproductive biology and/or statistics/epidemiology. The initial salary is \$40,000 to \$45,000 plus fringe benefits depending on the background. **Application Deadline: Until filled.** To apply please send letter, CV and the names, addresses, fax numbers and e-mail addresses of three references. Contact: Thomas B. Clarkson, D.V.M., Wake Forest University, School of Medicine, Medical Center Boulevard, Winston-Salem, NC, USA 27157-1040; Tel.: 1-336-716-1570; Fax: 1-336-716-1601; E-mail address: tclarkso@wfubmc.edu.

Employment Opportunities (cont.)

Field Assistant to the Director and Administrative Assistant to the Director, The Dian Fossey Gorilla Fund International. Two positions, both as assistants to the director of the Karisoke Research Center in Rwanda. Primary duties include assistance in management of our Rwandan field staff of gorilla trackers and anti-poaching patrols, preparation of field reports, payroll, and financial reports, regular contact with Rwandan governmental and non-governmental organizations, mountain gorilla behavioral observations, upkeep of demographic and photographic records, collection of GPS data, and responsibilities related to several ongoing conservation related field projects. While both assistants will share these duties, the Field Assistant will have more field duties and the Administrative Assistant will provide more administrative support to the Director. Conversational level French and English (Swahili is desirable), computer expertise, travel or field work in Africa, completed bachelors degree in biology, anthropology, wildlife management, or related fields. Salary is \$500 per month for each position, in addition to free room and board in Rwanda and a roundtrip air ticket. Term: One year each: Field Ass't. term begins June 2000, Administrative Ass't. begins July 2000. **Application Deadline: April 1, 2000.** Contact: H. Dieter Steklis, Chief Director, International Science and Conservation Program, The Dian Fossey Gorilla Fund International, Rutgers University, Department of Anthropology, Box 270, New Brunswick, NJ, USA 08903-0270; Tel.: (732) 932-9351; Fax: (732) 932-1564; E-mail address: science@gorillafund.org.

Animal Facilities Supervisor, New England Regional Primate Research Center. Harvard Medical School seeks an experienced individual to supervise animal care staff and provide care to nonhuman primates and other animals at the New England Regional Primate Research Center in Southborough, Massachusetts. Reporting to the Animal Facilities Manager, the Supervisor will coordinate the maintenance, staffing and cleanliness of assigned areas. The Supervisor will be responsible for staff and facilities compliance with all regulatory and health and safety procedures, and for the preparation of written reports concerning colony status, deficiencies, corrections and actions taken. Associates degree or higher; supervisory experience; significant animal care or relate experience; AALAS Certification. Candidates must be able to lift, push and pull 50 pounds, work as part of a team, have ability to handle flexible work assignments, and be prepared to utilize personal protective equipment including masks and respirators. Apply online at: <http://jobs.harvard.edu/jobs> or send cover letter and resume to: Lawrence Murphy C/O Harvard

University Employment Office Resume Processing Center, Requisition #2367; 11 Holyoke Street Cambridge, MA 02138, E-mail: lawrence_murphy@hms.harvard.edu.

Research Assistant. LABS of Virginia, Inc., a private primate breeding and research facility located in a South Carolina coastal community, currently has available a full-time 12-month Research Assistant (R.A.) position to study the relationship between neurotransmitters and aggression in macaques. The successful candidate will have the opportunity to work both in a captive facility and among a free-ranging population of rhesus macaques located on our island facility. This is an ideal position for an advanced, serious student who wishes to gain additional hands-on research experience prior to pursuing further study in psychobiological research. Must have a minimum of a bachelor's degree (Master's preferred) in the behavioral and biological sciences and must be willing to make a one-year commitment to work in a research setting. Previous primate research experience essential, with credible professional references within the primate field. Salary based on experience. Term of Appointment: One year. **Application Deadline: Until filled.** Please apply via e-mail. Send cover letter and CV. Applications will be accepted until the position is filled. Contact: Dr. Greg Westergaard, LABS of Virginia, Inc., P.O. Box 557, Yemassee, SC, USA; Tel.: (843) 589-5190, ext. 23; Fax: (843) 589-5290; E-mail: gwprimate@aol.com.

Field Assistant at the Caribbean Primate Research Center. The assistant will work with free-ranging rhesus monkeys on the island of Cayo Santiago, Puerto Rico, as part of a longitudinal study of biobehavioral development and temperament in young rhesus. Responsibilities will include collection of behavioral data throughout the year, data tabulation and weekly reports, and assisting senior investigators with physiological sampling of subjects during the annual trapping of the colony. The appointment is for 1 to 2 years, beginning in June 2000. A stipend is available to cover travel and living expenses. Bachelor's degree in biology, zoology, psychology or anthropology; experience collecting behavioral data (preferably with primates) and familiarity with computers. A high level of maturity and ability to get along with people is essential. **Application deadline: April 30, 2000.** Send a letter of interest, resume and contact information for three references to Dr. Kathlyn L. Rasmussen, NIH Animal Center Bldg. 112, P.O. Box 529, Poolesville, MD 20837; E-mail address: klr@helix.nih.gov.

Animal Caretaker (#0224-M), Language Research Center. Essential job functions: Cleaning and disinfecting cages and surrounding ar-

reas; assisting research technicians with research protocols; preparing food and feeding animals; assisting research technicians in data collection and entry; and observing, assessing and recording the health and well-being of animals. Must have a high school diploma or GED and one year animal care experience. Prefer knowledge of USDA standards for animal facilities; nutrition and dietary requirements of animals; good social skills with children, animals and co-workers; knowledge of other cultures and languages, with experience living in other places; and knowledge of conservation issues. Resume and names and phone numbers of three references required. Salary: \$20,040 Paygrade 7. Date opened: 10-29-99 - **Deadline - tba.** Contact: Mary Minahan, Language Research Center, Georgia State University, University Plaza, Atlanta, GA 30303, USA; Tel.: (404) 244-5831; Fax: (404) 244-5752; E-mail: panbonobo@yahoo.com.

Research Technician, Wisconsin Regional Primate Research Center, University of Wisconsin. We are searching for a highly motivated, independent individual to join a team investigating the behavioral control of endocrine function in marmoset monkeys. The successful applicant will provide directed technical support for, and will assist in running, an NIH-funded study of social and reproductive regulation of adrenal function. Duties include, but are not limited to, scheduling experimental procedures, collecting blood samples, performing hormone assays, performing hormonal treatment of animals, preparing and initial processing of data, coordinating student assistants, preparing supplies, and maintaining experimental records. Assistance with immunohistochemistry and with surgeries may also be required. Some weekend, evening and early morning hours will be required. Bachelor's degree in biological science or related field. At least one year of laboratory experience, preferably working with animals. Minimum \$23,500 annual (12 months), depending on qualifications. Start date: June 1, 2000; renewable annually, based on performance and funding. **Application Deadline: May 5, 2000.** Contact: Wendy Saltzman, c/o Susan Carlson, Wisconsin Regional Primate Research Center, University of Wisconsin, 1220 Capitol Court, Madison, WI, USA, 53715-1299; Tel.: (608) 263-3515; Fax: (608) 263-4031; E-mail: saltzman@primate.wisc.edu

Research Technician II, Georgia State University, Language Research Center. Assist in the conduct of research in a behavioral research laboratory; data collection and behavioral management of apes; caring for, cleaning and feeding of apes; monitoring and maintaining psychological well-being of apes; and organizing data, tapes and papers. Bachelors degree and

Employment Opportunities (cont.)

two years research experience; or a high school diploma or GED and six years related research experience; or a combination of training and experience. Knowledge of nonhuman primates and their behavior; experience in the use of computers and data base software; and ability to work with apes and others in a laboratory setting. Position requires working some holidays; working on weekends; working overtime; regular attendance; and a negative TB test. Salary: \$24,500 - \$31,291 Paygrade 10. **No application deadline.** Contact: Mary Minahan, Language Research Center, Georgia State University, University Plaza, Atlanta, GA 30303, USA; Tel.: (404) 244-5831; Fax: (404) 244-5752; E-mail: panbonobo@yahoo.com.

Animal Keeper, Disney's Animal Kingdom, Orlando, Florida. Within our team environment,

you will partner with operations, maintenance, horticulture, research, veterinary and education departments. As an Animal Keeper, you will be responsible for the care, management, welfare and enrichment of all the animals in the animal collection. The successful candidates will work under the direction of the Zoological Manager or Curator. Log on to our web site at www.disneycareers.com for information about this position and other professional opportunities at Disney. High school degree or equivalent with work experience. A college degree in biology or related field strongly preferred. Successful candidates will receive competitive compensation and a comprehensive benefits package. Please send cover letter and resume on white paper to: Disney Worldwide Services, Inc., Professional Recruitment, XINTAB012, P.O. Box 10,090, Lake Buena Vista, FL 32830

Education Manager Area, Disney's Animal Kingdom, Orlando, Florida. Within our team environment, you will partner with operations, maintenance, horticulture, research and veterinary departments. As an Education Manager, you will be responsible for the management of animal and conservation-related content training of Operational Cast Training Programs at Disney's Animal Kingdom. Log on to our web site at www.disneycareers.com for more information about this and other professional opportunities at Disney. Candidates must possess experience in an AZA-accredited institution and a Bachelor's degree in a related field. Other education/experience combinations considered. Please send cover letter and resume on white paper to: Disney Worldwide Services, Inc., Professional Recruitment, XINTAB012, P.O. Box 10,090, Lake Buena Vista, FL 32830.

Volunteer Opportunities

Primate Care Volunteer, Highland Farm and Gibbon Sanctuary, Thailand. We are looking for a volunteer primate caregiver for a private gibbon sanctuary in N.W. Thailand. The volunteer will be living on site, which is located near 42 km. south of Mae Sot. The volunteer will assist the directors in all aspects of sanctuary operations: food preparation and feeding, cage cleaning, guiding visitors, and seeking material contributions. The volunteer will also accompany directors to remote locations to pick up gibbons in crisis, and perform other varied tasks. For someone with primate medical experience there exists the opportunity to establish a primate clinic. Responsibility for organizing the clinic includes assessing equipment & medication needs and costs, establishing & implementing routine health check procedures for the gibbons. Long term commitment is desirable. The ideal candidate would have a B.A. in biology, zoological studies, or anthropology (physical) and some hands on experience with primates in a captive situation. Previous travel in Asia would also be advantageous. Applications from others welcome providing you have a strong desire to learn and are dedicated to primate conservation. **All volunteers are required to pay \$600 U.S. per month.** This fee includes lodgings, meals (meat eaters or vegetarians (vegans) catered to), access to truck, transportation once you arrive (including airport pick-up in Mae Sot), and expenses while traveling on sanctuary business. (i.e. traveling to pick up a new gibbon etc.) **Application Deadline: None.** Minimum stay of 1 month, but longer term volunteers welcome. Contact: Pharanee & Bill Deters, E-mail address: highland_ape@hotmail.com.

Volunteer Field Assistant(s) needed for research investigating the effects of logging on reproduction in female lemurs. Duties will

involve focal animal observations, phenology and censusing in both disturbed and undisturbed forest. Additional duties include collecting and processing fecal samples, entering data that you have collected into excel spreadsheet files. The site in Madagascar is very modest, requiring tent living, river bathing and a very simple diet consisting primarily of rice and beans. Field season dates for 2000 are: April 10 - June 10; August 15- Sept 30. If you have prior experience, I would consider hosting a stay for a longer period (6 months +), including the months I am not in the field. Training in bio anthro, primatology, animal behavior or biology is strongly desired. Ability to speak French is preferred but not required. Must be able to live under modest field conditions and be capable of hiking in steep and wet terrain for several hours five days per week. Ability to work independently and as a team member is necessary. Previous travel in developing nations preferred. Volunteers must fund the cost of getting to the field site as well as room and board at the field site. A minimum commitment of two months is required, no stipend is available. Debi Durham; Tel.: (530) 756-8265; E-mail: ddurham@ucdavis.edu.

The following three Volunteer positions are for the Chimpanzee Release Centre, HELP Congo. For all three, the volunteer will work with national staff and other ex-patriate volunteers to rehabilitate orphaned chimpanzees in islands and then to release them in the wild. There is NO salary. The volunteer will have to pay for his/her own ticket (round trip) and all living expenses. Compensations may be discussed. **Application Deadline: 31 March for all three.** Contact: Laurence Vial, HELP International, 82 rue d'Arcueil, Gentilly, France 94250; Tel.: (33)1.45.47.74.78 or (33)6.16.99.05.02; Fax: (33)1.42.98.12.97; E-

mail: laurevial@aol.com. The three positions are: **Veterinary Volunteer** - This veterinarian will stay at the "Triangle", a part of forest near Konkouati Lake. He or she will organize the following of the released chimpanzees in the forest (local staff and volunteers' management, collection of field data, and maintain of the material) and be responsible for the health control of the Konkouati Sanctuary's chimpanzees as well. Qualifications: The following are desirable but not strictly required: experience in vet practice and primatology - flexible; experience in Africa and/or in fieldwork in swamped forests; experience in staff's management. Term of Appointment: at least 1 year.

Veterinarian Assistant Volunteer - This volunteer will stay in Konkouati Sanctuary and assist the veterinarian during the next release for the captures, transport and release of the chimpanzees. Qualifications: The following are desirable but not strictly required: - experience in Africa and/or in another tropical country; practice background in anesthetic captures and in great apes; manipulations (vet or keepers perfect) - capacity to work in a team; flexible. There is NO salary. The volunteer will have to pay for his/her own ticket (go and back) and his/her living expenses. Term of Appointment: at least 6 months (even 3 months for the vet).

Volunteer Manager for Chimpanzee Sanctuary - This person will manage the local staff and the volunteers who work in Konkouati Rehabilitation Centre, organize all the jobs necessary for the running of the project, and maintain material and facilities. Qualifications: The following are desirable but not strictly required for the job: flexible; experience in Africa and/or field background in tropical countries; French language knowledge; experience in staff's management; mechanic and odd-jobs knowledge; conservation awareness. Term of Appointment: at least 1 year.

Conference and Workshop Announcements

The American Museum of Natural History announces the 70th James Arthur Lecture on the evolution of the human brain, "Do We Owe Our Intelligence to a Predatory Past?" by C. K. Brain, from the Transvaal Museum (South Africa), March 20, 6:00pm, Kauffmann Theater, American Museum of Natural History, 1st floor. No tickets required. For further information, call (212) 769-5100.

Evolutionary Psychology and Motivation.

The 48th Annual Nebraska Symposium on Motivation will be held on March 30-31, 2000 on the campus of the University of Nebraska, Lincoln. The general topic of the Symposium will be Evolutionary Psychology and Motivation. Six invited talks will be given over the two days; posters will be scheduled for the afternoon of March 30. An additional session, which will focus on the interface between clinical and evolutionary psychology, will be held on Saturday morning, April 1. The Symposium editors are Jeffrey French, Alan Kamil, and Daniel Leger. The invited speakers are: Martin Daly and Margo Wilson, Gerd Gigerenzer, Robert Seyfarth and Dorothy Cheney, Steven Gangestad, Martha McClintock, Randolph Nesse. Call for posters: You are invited to submit a proposal for a poster to be presented during the Symposium. Any topic related to evolutionary psychology and motivation will be considered. Poster proposals should include the following: a) a cover sheet with the title of the poster and the author's name, affiliation, mailing address, phone number and e-mail address. b) an abstract not to exceed 250 words. The Symposium is free and open to the public. However, for planning purposes, please pre-register by March 17, 2000. To pre-register, please send the following information to Claudia Price-Decker by e-mail (cpriced@unlnotes.unl.edu) or regular mail (Department of Psychology, University of Nebraska, Lincoln, NE 68588-0308): Name, affiliation, address (including zip or postal code), and e-mail address.

Primates: Our Past, Their Future (Primate Society of Great Britain Millennium Meeting), 1 April, 2000. Location: Natural History Museum, London, UK. Contact: mark Collard, Department of Anthropology, University College London, Gower St., London WC1E 6BT, UK; E-mail: m.collard@ucl.ac.uk; Tel.: 0171-380-7842 or Fax: 0171-380-7728

European Marmoset Research Group Workshop 2000 - April, 3rd-5th 2000, Paris, France. European Marmoset Research Group Workshop 2000: An Inter-disciplinary Forum

for Discussion and Training in Primate Biological and Biomedical Research. This is a High-Level Scientific Conference with financial support from the European Commission Human Potential Programme. The European Marmoset Research Group (EMRG) is a nonprofit organization which was established in 1994 to facilitate inter-disciplinary communication between institutions - academic and industrial - conducting biological and/or biomedical research with primates. The workshop proposed for 2000 will bring together expert scientists, veterinarians and technical personnel, on the one hand, and emerging doctoral and postdoctoral scientists, on the other hand, in eight disciplines in the life sciences: behavioral neuroscience, genetics, immunology, laboratory technology/management, pharmacology, reproduction, toxicology, wildlife biology. Consequently, as much weight will be given to addressing the issues of why and when to choose marmosets/tamarins as the research species, as will be given to subject matter per se. Lecture sessions will include reviews of the merits and limitations of marmosets/tamarins relative to other species, and specific presentations of the very latest empirical findings and methodological advances. Interactions within the EMRG have already contributed significantly to the reduction, replacement and refinement of laboratory based research with nonhuman primates and it is anticipated that this will be a continuing and developing theme of the 2000 and subsequent workshops. For information regarding the EMRG 2000 Conference or for the latest EMRG Newsletter, please contact: Dr. David Abbott, Regional Officer for the USA, Mexico and Canada, Wisconsin Regional Primate Research Center, University of Wisconsin, 1220 Capitol Court, Madison, WI 53715-1299 E-mail: abbottd@primate.wisc.edu URL: <http://www.dpz.gwdg.de/emrg/ws2000.htm>

Representing Animals at the End of the Century, 13-15 April, 2000. Location: Center for Twentieth Century Studies, University of Wisconsin-Milwaukee. Focus: Connections between our understandings of animals and the historical and cultural conditions in which those understandings have been formed. Contact: Nigel Rothfels or Andrew Isenberg, Conference Organizers, Center for Twentieth Century Studies, University of Wisconsin-Milwaukee, P.O. Box 413, Milwaukee, WI 53201 E-mail: ctr20cs@uwm.edu; Tel.: 1-414-229-4141 Fax: 1-414-229-5964.

Sunbelt XX International Sunbelt Social Network Conference, Vancouver, British Columbia April 13-16, 2000. The International

Sunbelt Social Network Conference is a major forum for social scientists, mathematicians, computer scientists and all others interested in social networks. The conference provides an opportunity for individuals interested in theory, methods, or applications of social networks to share ideas and common concerns. For complete information on the conference, visit <http://www.sfu.ca/~insna>, or contact Bill Richards, School of Communication, Simon Fraser University, Burnaby, BC V5A 1S6, Canada; richards@sfu.ca; (604) 251-3272.

The Relationship System and Individual Variation in Functioning: an Interdisciplinary Dialogue.

April 15-16 2000, Washington, DC. This conference is the second working conference on this topic sponsored by the Georgetown Family Center. Individual variation and its connection to constitutional, physical, physiological, genetic and psychological factors, as shaped by the relationship system, is the subject of this multidisciplinary conference. Presenters from anthropology, biology, ethology, psychology, primatology and human physiology will exchange knowledge with those who have been studying the human from a Bowen family systems theory perspective. Natural scientist speakers are: Carol Berman, John Bonner, C. Sue Carter, Lynn Fairbanks, Mark Flinn, Barbara King, Michael Lumpkin, Mary Beth Saffo, Jay Schulkin, Barbara Smuts, and Stephen Suomi. An equal number of speakers approaching the topic from a Bowen theory perspective will also present. For further information contact Marjorie Hottel, Georgetown Family Center; Tel.: (800) GFC-6882 or 202-965-0730; Fax: 202-337-6801; Email: GFC1@georgetownfamilycenter.org.

Meeting the Information Requirements of the Animal Welfare Act (2 day workshop),

27-28 April, 2000. Organizer: Animal Welfare Information Center (AWIC), US Department of Agriculture. Location: National Library of Agriculture, Beltsville, Maryland, USA. Focus: To provide an overview of the Animal Welfare Act and the information requirements. Includes Internet resources and instruction on related database searching. Intended for: principal investigators, IACUC members, veterinarians, animal use program administrators. Limited to 20 people. No fee. Contact: AWIC, 10301 Baltimore Avenue, Beltsville, MD 20705-2351. E-mail: awic@nal.usda.gov; Tel.: 1-301-504-6212 Fax: 1-301-504-7125.

International Conference: The Apes: Challenges for the 21st Century, 10-13 May 2000, Brookfield Zoo, Brookfield. We invite

Conference and Workshop Announcements (cont.)

interested parties to submit papers, posters or videos pertaining to husbandry, medicine, nutrition, behavior, taxonomy, reproduction, fieldwork or conservation issues of apes for our conference. The Ape Taxon Advisory Group Meetings will be hosted by Lincoln Park Zoo on May 14 through 16 immediately following the conference. Carol Sodaro, Brookfield Zoo. For information on registration and submission of abstracts: Ape Conference Planning Committee, Brookfield Zoo, Brookfield, Illinois 60513-0719, USA, Tel: (708) 485-0263 x 604; Fax: (708) 485-3140; E-mail: apecon@brookfieldzoo.org.

Ape Taxon Advisory Group Meeting 2000, May 14-16, Lincoln Park Zoo, Chicago, Illinois. For more information contact Ape TAG secretary, Kristen Lukas, Tel.: (312) 742-7232; Fax: (312) 742-7220; E-mail: lpzpri@condor.depaul.edu.

American Society of Primatologists, 21-24 June 2000, Regal Harvest House, Boulder, Colorado. Contact: Mark Laudenslager, Local Arrangements Chair, University of Colorado-HSC, Department of Psychiatry, 4455 E. 12th Avenue, Denver, CO 80220, USA. E-mail: mark.laudenslager@uchsc.edu. More details available on the ASP web site (www.asp.org) and in this issue of the *ASP Bulletin*.

Meeting the Information Requirements of the Animal Welfare Act (2 day workshop), 22-23 June, 2000. Organizer: Animal Welfare Information Center (AWIC), US Department of Agriculture. Location: National Library of Agriculture, Beltsville, Maryland, USA. Focus: To provide an overview of the Animal Welfare Act and the information requirements. Includes Internet resources and instruction on related database searching. Intended for: principal investigators, IACUC members, veterinarians, animal use program administrators. Limited to 20 people. No fee. Contact: AWIC, 10301 Baltimore Avenue, Beltsville, MD 20705-2351. E-mail: awic@nal.usda.gov Tel.: 1-301-504-6212 Fax: 1-301-504-7125.

Animal Behavior Society (37th Annual), 5-9 August, 2000. Hosts: Morehouse College and Zoo Atlanta. Contact: Larry Blumer E-mail: lblumer@morehouse.edu Web site: http://www.animalbehavior.org/ABS/Program/Morehouse_00/index.html.

3rd International Symposium-Workshop on Frugivores and Seed Dispersal: Biodiversity and conservation perspectives, Sao Paulo, Brazil, 6-11 August 2000.

Plant-animal interactions have attracted the attention of evolutionary biologists and field ecologists since the time of Darwin. In fact, Darwin himself laid the foundation for pollination biology, a field that has flourished ever since. The evolutionary ecology of a second type of plant-animal interaction, herbivory, started a rise to prominence in the 1960s. Seminal papers on frugivory followed in the 1970s. Because frugivory does not have the long history of pollination biology and lacks the agricultural importance of herbivory, the field was slower to develop. The third International Symposium on Frugivores and Seed Dispersal will be held in the Hotel Fazenda Fonte Colina Verde, São Pedro, São Paulo, Brazil from 6-11 August 2000. An estimate of 250 professionals (botanists, zoologists, ecologists, foresters) from around the globe will come to the São Pedro symposium. Join us there! <http://www.unicamp.br/ib/f2000/>

Measuring Behavior 2000 3rd International Conference on Methods and Techniques in Behavioral Research Nijmegen, The Netherlands, 15-18 August 2000. Measuring Behavior 2000 will offer a mix of oral papers, poster presentations, technical demonstrations, training sessions, user meetings, scientific tours, an exhibition of scientific books, instruments and software, and a pleasant social program. All presentations will deal with innovative methods and techniques in behavioral research. The proceedings of the 1998 meeting (<http://www.noldus.com/events/mb98/mb98.htm>) give a good impression of what it is all about. Conference Venue Nijmegen is a lively university town located in the central-east part of the Netherlands, with a history dating back to Roman times. If you wish to propose a symposium or other conference activity, please send your suggestions to Wineke Schoo (w.schoo@noldus.nl). Measuring Behavior 2000 P.O. Box 268 6700 AG Wageningen The Netherlands Phone: +31-317-497677 Fax: +31-317-424496 E-mail: mb2000@noldus.nl Web site: <http://www.noldus.com/events/mb2000/>

American Veterinary Medical Association (Annual) 22-26 August, 2000. Location: Salt Lake, Utah, USA. Contact: Tel. 1-847-925-8070.

Primateology at the Turn of the Century (Symposium). Russian Federation State Research Center - Institute of Biomedical Problems (Director - A.I.Grigoiriev) in cooperation with Russian Academy of Medical Sciences - Research Institute of Primatology (Director - B.A.Lapin) will organize the Symposium "Pri-

matology at the Turn of the Century". It will discuss the use of nonhuman primates for studying environmental medicine and physiology, as well as primate care, husbandry and selection for various biomedical investigations. Symposium will be held on September 26-29, 2000, in Moscow as a part of Russian National Conference "Living beings and their environment: Life Support and Protection of Humans under Extreme Conditions". The Conference, convened by several prominent Russian agencies, is open to foreign scientists as well. The Conference will be held in the new building of the Russian Academy of Sciences Presidium, Moscow, Russia on September 26 - 29, 2000. Further information about the Conference/Symposium can be obtained from: Ilyin, Eugene A. (Program) - (095) 195-0223 Smirnova, Tamara A. (Abstracts) - (095) 195-6388 Romanov, Alexander N. (Logistics) - (095) 195-0103. Secretariat can be reached by mail: E.A. Ilyin, RF SRC-Institute of Biomedical Problems, 76A, Khoroshevskoye shosse, 123007 Moscow, Russia; Fax: (095)-195-2253; E-mail: meshkov@mmcc.ibmp.rssi.ru.

Associazione Primatologica Italiana Congress (XIVth), 4-6 October, 2000. Location: Pisa-Museo di Calci, Pisa, Italy. For information, contact: Prof. Silvana Borgognini Tarli, Dipartimento di Etologia, Ecologia, Evoluzione, Via Volta, 4-56126 Pisa, Italy. Tel.: 050/24613, 050/44484 Fax: 050/24653 E-mail: borgognini@discau.unipi.it Website: <http://www.unipv.it/webbio/api/cong14/14con.htm>

18th Annual Symposium on Nonhuman Primate Models for AIDS, October 4-7, 2000. The Wisconsin Regional Primate Research Center of the University of Wisconsin, Madison will host the 18th Annual Symposium on Nonhuman Primate Models for AIDS on October 4-7, 2000 at the Monona Terrace Convention Center, One John Nolen Drive, Madison, Wisconsin. This conference has come to serve an important role in the exchange of information on work in progress in AIDS-related research using the nonhuman primate model. It annually attracts approximately 300 scientists working in AIDS related research from the United States, Puerto Rico and several foreign countries and is funded in part by the National Center for Research Resources of the National Institutes of Health. This Symposium will consist of five (5) sessions focusing on primate research utilizing SIV, HIV-2, HIV-1, SHIV and other primate retroviruses. Topics will include pathogenesis (Chair, Chris Miller, California Regional Primate Research Center), immunology (Chair, Norman Letvin,

Conference and Workshop Announcements (cont.)

Beth Israel Hospital), vaccines/therapeutics (Chair: John Shiver, Merck), virology (Chair: Ronald Desrosiers, New England Regional Primate Research Center). We will have a special session dealing with Resource Development (chaired by Neal Nathanson, Office of AIDS Research). This will include updates on tetramers (John Altman, Emory); intracellular staining (Luis Picker, Oregon); Genetics (Jeff Rogers, Southwest Foundation for Biomedical Research); MHC class I (David Watkins, Wisconsin); MHC class II (Ronald Bontrop, The Netherlands), and antibody-mediated depletion (Keith Reimann, Beth Israel Hospital). Dr. Andrew McMichael (Oxford University) will deliver the Keynote Address. David I. Watkins, Ph.D., Scientific Program Chair. Please contact the Conference Coordinator by **March 15, 2000** to receive registration/abstract information. RSVP by mail, FAX or E-mail. Contact: Symposium on NHP Models for AIDS, C/o Edi Chan, Conference Coordinator, Wisconsin Regional Primate Research Center, 1220 Capitol Court, Madison, WI 53715-1299; Tel.: (608) 263-3500; Fax: (608) 263-4031; E-mail: chan@primate.wisc.edu.

The Nonhuman Primate Pathology Seminar and Workshop 2000, October 7-8, 2000, Wisconsin Regional Primate Research Center University of Wisconsin. To be held in conjunction with the Symposium on Nonhuman Primate Models for AIDS (October 4-7). Sponsored in part and hosted by the Wisconsin Regional Primate Research Center. Tentative schedule includes a dinner and speaker Saturday night, the 7th, followed by case by case presentations all day Sunday, the 8th. The conference will be held at the Pyle Conference Center, with lodging and dinner arranged within walking distance on the beautiful campus of the University of Wisconsin-Madison on Lake Mendota. Format for case presentations will be traditional, with registrants receiving case slides and histories pre-conference. To receive more information and registration materials please contact either Dr. Amy Osborne at ausborne@primate.wisc.edu or Dr. Iris Bolton at ibolton@primate.wisc.edu or write either at WRPRC, University of Wisconsin, 1220 Capitol Court, Madison, WI 53715-1299.

Meeting the Information Requirements of the Animal Welfare Act (2 day workshop), 26-27 October, 2000. Organizer: Animal Welfare Information Center (AWIC), US Department of Agriculture. Location: National Library of Agriculture, Beltsville, Maryland, USA. Focus: To provide an overview of the Animal Welfare Act and the information requirements. Includes Internet resources and instruction on related database searching. Intended for: principal investigators, IACUC members, veterinarians, animal use program administrators. Limited to 20 people. No fee. Contact: AWIC, 10301 Baltimore Avenue, Beltsville, MD 20705-2351. E-mail: awic@nal.usda.gov Tel.: 1-301-504-6212 Fax: 1-301-504-7125.

Association of Primate Veterinarians (Annual), 3-5 November, 2000. Location: San Diego, California, USA. Contact: Christine Parks, Research Animal Resources Center, University of Wisconsin, 396 Enzyme Institute, 1710 University Avenue, Madison, Wisconsin 53705-4098; E-mail: parks@rarc.wisc.edu; Tel.: 608-262-1238.

American Association for Laboratory Animal Science, 5-9, November, 2000. Location San Diego, California, USA. Contact: Tel.: 1-901-754-8620.

European Federation for Primatology, London, 27-29 November, 2000. A scientific meeting will be held in London on the 27th, 28th and 29th November, 2000. On Monday, 27th November there will be a series of workshops. Each workshop will be run by two eminent primatologists. The topics will be in the areas of Behavioural and Physiological Development, Ecology and Sociality, and Cognition and Social Complexity (to be held at Roehampton Institute, London) and Genetics and Evolution, the Use of Primates as Research Models, and Viral Diseases in Simian Primates (to be held at Goldsmith's College, London). Applications will normally be considered from post-graduate students from EFP Societies. The workshops are available as half day units and each participant will have the opportunity to attend two workshops. Further details about these workshops can be obtained from Ann

MacLarnon (School of Life Sciences, Roehampton Institute, West Hill, London, SW15 3SN, U.K. Tel.: +44 (0) 20 8392 3524, Fax.: +44 (0) 20 8392; E-mail: Life_Sciences@roehampton.ac.uk). During the following two days (28th and 29th November), a total of fourteen/sixteen talks will be given by invited speakers at the Meeting Rooms of the Zoological Society of London in Regent's Park, London. The main themes will be: Ecology and Conservation, Reproduction and Mating Systems, Evolution and Biology, and Cognition and Conflict. The following have agreed to present papers: Filippo Aureli, Mike Bruford, Alan Dixson, Robin Dunbar, Annie Gautier, Keith Hodges, Peter Kappeler, Bob Martin, Ronald Noe, Chris Pryce, Volker Sommer, Caroline Tutin, Jan van Hooff and Elisabetta Visalberghi. Further details about this part of the conference may be obtained from Hilary Box (Department of Psychology, University of Reading, Whitenights, Reading, RG6 2AL, U.K. Tel.: +44 (0)118 9316668, Fax: +44 (0)118 9316715, E-mail: h.box@reading.ac.uk). The dates of the meeting immediately precede that of the Winter meeting of the Association for the Study of Animal Behaviour that will also be held at the Zoological Society of London. More specific information is available on the PSGB web site: <http://www.psgb.org/>

International Primatological Society, 7-12 January 2001, Adelaide, Australia. Host: Australasian Primate Society. President, Mr. John Lemon, Western Plains Zoo, Dubbo, NSW. Mr. Graeme Crook is Chairman of the Organizing Committee. Deadlines: Symposium titles was 31 December 1999. **Deadline for Abstracts: 31 May 2000.** For more information and to be put on the Congress Organizer's mailing list, contact: Conventions Worldwide, PO Box 44, Rundle Mall, SA 5000, Australia; E-mail address: satconv@camtech.net.au. (Send postal address, telephone, fax and e-mail address). Tel.: +61 8 8363 0068; Fax: +61 8 8363 0354; Graeme Crook's e-mail addresses: APS_Editor@msn.com.au or try crook.graeme@etsa.com.au. Visit the Congress website at www.primates.on.net for the latest updates, including a list of proposed symposia submitted. Graeme Crook, Chairman, Organizing Committee, XVIIIth Congress, International Primatology Society Adelaide.

Australasian Primate Society, January 2001. The Annual General Meeting will be held during the IPS Congress in Adelaide. The next APS Conference will be held in late 2001 at a venue to be determined. Contact: Graeme Crook E-mail: APS_Editor@msn.com.au.

If you wish to announce a job opening or upcoming conference in the next *ASP Bulletin*, please contact the Editor: Janette Wallis:
(405) 271-5251, ext. 47612; janette-wallis@ouhsc.edu.

DEADLINE for the June issue of the *ASP Bulletin* is May 15th.
Please remember to include application/registration deadlines.



AMERICAN SOCIETY OF PRIMATOLOGISTS

2000

Important Notice: Beginning this year, all full and student payments to ASP include an annual subscription to the *American Journal of Primatology*

Please type or print clearly

Last name: _____

First name: _____

Address: _____

City: _____

State: _____ Zip: _____

Country: _____

Telephone: _____

Fax: _____

E-mail: _____

Specialty in _____

Primates: _____

Please Note: The information listed above will be included in the 2000 Directory, and made available to all members. If you wish any information to remain confidential (e.g., phone numbers), please do not fill in the blank. All information requested at the bottom of this form will be treated anonymously. The information is requested for the purpose of assessing ASP membership trends.

1. Discipline of terminal degree (e.g., Zoology, Anthropology) _____

2. Decade terminal degree was (will be) awarded:
 ___ 50 ___ 60 ___ 70 ___ 80 ___ 90 ___ 00

3. Current area of research interest (please check the one term that best characterizes your interests):

- | | |
|----------------|----------------------------|
| ___ Behavior | ___ Husband/Mgmt |
| ___ Ecology | ___ Med. Primatology |
| ___ Biomedical | ___ Reproduction |
| ___ Taxonomy | ___ Conservation |
| ___ Cognition | ___ Anatomy/Morphology |
| ___ Genetics | ___ Communication |
| ___ Enrichment | ___ Neurobiology |
| ___ Physiology | ___ Other (Specify: _____) |

Please check all that apply:

- [] ASP Dues (Full)* \$82.00
 [] ASP Dues (Student)* \$51.00
 [] ASP Dues (Retired) \$15.00

(Does NOT include an annual subscription to the *American Journal of Primatology*)

- [] IPS Dues (Full)* \$20.00
 [] IPS Dues (Student)* \$10.00

* Membership in ASP and IPS for individuals from source or less developed countries is free to those unable to pay due.

- [] Foreign postage (outside N. America) for *American Journal of Primatology* \$45.50
 [] ASP Conservation Fund \$ _____

Members are reminded it costs ASP \$4 to process credit card payment. Please consider adding this much (or more) to your total.

- [] Please add to my total to help ASP offset credit card processing costs \$ _____

TOTAL (in \$US) \$ _____

- [] **Check** [] **Money Order** [] **Credit Card**
 (Visa or Mastercard Only)

Acct#: _____

Expiration date: _____

Signature of Cardholder: _____

Please make check payable to:

American Society of Primatologists

Send payment to:

Steven J. Schapiro, Treasurer, ASP
 Dept. of Veterinary Sciences
 Univ. of Texas, M.D. Anderson Cancer Ctr.
 Rt. 2, Box 151-B1
 Bastrop, TX 78602-9733 USA

4. Gender: ___ F ___ M

5. Employment environment (please check one):

- | | |
|---------------------------------------|----------------------------|
| ___ College/University | ___ Zoological Park |
| ___ Private Research | ___ Corporation |
| ___ Student | ___ Non-profit Corp. |
| ___ Medical School | ___ Private Consultant |
| ___ Library | ___ State Government |
| ___ Museum | ___ Other (specify: _____) |
| ___ Regional Primate Research Center | |
| ___ State/Federal research laboratory | |



They're not as cool as primates, but the Rocky Mountains National Park is home to a variety of wildlife - including these bears & bison. The Park is only an hour's drive from ASP's conference site in Boulder.



**Don't miss this
year's ASP meeting in
beautiful Boulder, CO.
See details in this issue
of the *ASP Bulletin***

Janette Wallis, Ph.D. - Executive Secretary
AMERICAN SOCIETY OF PRIMATOLOGISTS
Department of Psychiatry & Behavioral Sciences
University of Oklahoma Health Sciences Center
PO.Box 26901
Oklahoma City, OK 73104-5020

(Please do not send Change of Address to this address.
Send to Steve Schapiro, Ph.D., UTMDACC, Dept. Vet. Res.,
Rte. 2, Box 151-B1, Bastrop, TX 78602)