

A Message from the President...

What is the status of primates and primate conservation, and what are the prospects for the future? This issue has been in my thoughts recently as the new millennium approaches (a good time for reflection on where things stand in general), and as recent events have brought a mixed bag of good news and bad news. In September the 2000 IUCN Red List of Threatened Species was released (see the press release at <http://www.iucn.org/redlist/2000/news.html>). This revision indicated that the number of primate species considered 'Critically Endangered' leapt from 13 to 19 in the last four years, an increase of nearly 50%. The number of primate species considered 'threatened' (i.e., Critically Endangered, Endangered, or Vulnerable) rose from 96 to 116 species. In their news release, IUCN indicated that this represented the greatest change among mammals. Moreover, Madagascar, having lost more than 90% of its original natural vegetation, is listed as having more Critically Endangered and Endangered primates than anywhere in the world.

But there has been some good news as well. In October, the Senate unanimously passed the Great Ape Conservation Act (<http://thomas.loc.gov/cgi-bin/query/z?c106:H.R.4320.ENR>), which provides for funds up to \$5 million per year for the next 5 years to protect wild great apes. This bill was signed into law on 1 November 2000 by President Clinton, and is now Public Law No. 106-411. Soon after, however, there was more bad news: on 12 November 2000, the Miss Waldron's red colobus was officially reported 'Extinct'. And yet, new primate species continue to be discovered – the very next day, 13 November 2000, the Associated Press carried a story about the discovery of three new species of mouse lemur in Madagascar.

As scientists, we're fascinated by what we don't know; as primatologists, we should be dismayed at the limited amount of time we may have left to discover more about these most fascinating creatures. As we enter the next mil-

lennium, the future of primates is more uncertain than ever. I'm encouraged that the media have been giving what appears to be increased attention to these matters. I'm also proud that the American Society of Primatologists has played such an active role in primate conservation, and I'm especially pleased with the way we've done it – by recognizing people who've made clear contributions to primate conservation and through our small grant and subscription awards programs aimed at researchers and conservationists working in habitat countries. Many ASP members may not be aware that most members of the editorial board of our journal, *AJP*, donate their complimentary subscriptions to a pool for distribution to individuals in source countries who might not otherwise receive a journal. The commitment to primate conservation is deep in our Society.

Clearly, more needs to be done. I encourage ASP members to consider additional ways in which our Society can make a difference and to communicate your ideas to members of the Conservation Committee. If you know of a deserving source country primatologist who might benefit from receiving a copy of our journal, please let our Treasurer, Steve Schapiro, know. Remember that purchases at Amazon.com that are made through our web page link result in 5% of the purchase price being contributed to our Conservation fund (see elsewhere in the Bulletin for more information). The new millennium is close at hand, and it's a good time to think about whether there is more that we can be doing to insure the survival of nonhuman primates through the next thousand years. – *John Capitanio, ASP President*

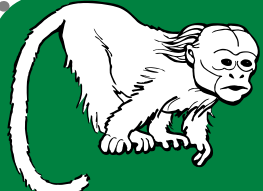
Abstract Deadline for 2001 ASP Conference Later than Usual

Abstracts for the 2001 ASP Conference in Savannah will be due much later than in past years. Meeting abstracts will no longer be printed in the *American Journal of Primatology*, but will be available online in ASP/e, the new electronic journal of the American Society of Primatologists. As a result, we are able to extend the deadline for abstract submission.

Symposia and workshop abstracts will be due **March 15th, 2001**. Paper and poster abstracts will be due **April 1st, 2001**.

We plan to have online abstract submission and the abstracts and conference program will be available in the public section of the ASP web page.

Abstract details, registration forms, and hotel information will be sent to all members in early February. If you have questions about the program, please contact Tammie Bettinger at tlb@clevelandmetroparks.com or (216) 635-3314. - *Tammie Bettinger, ASP Program Chair*.



Inside this Issue

- Results of Member Survey
- ASP Membership Form
- Call for Award Nominations
- ASP Ethics Statement
- Announcements for ASP 2001!

From the Local Arrangements Committee

The Twenty-fourth Annual ASP meeting is being hosted by Armstrong Atlantic State University (Department of Biology). The dates for the conference are August 8-11, 2001. The reception, paper and poster sessions will take place on AASU's campus. The banquet will be held at the Historic Savannah Station.

There are several hotels within the area of AASU. The Days Inn is the closest and is within walking distance to the campus. However, remember that August in Savannah is hot and humid. The Biology Department will be hiring students to run shuttles to and from the local hotels during the paper and poster sessions. Also, the Days Inn is offering discount rates to

ASP members. Only a limited number of rooms are available, so don't delay in making your reservations.

Delta Airlines and Avis are the "Official Airline and Car Rental Companies" for the conference. Airline tickets must be purchased 60 days in advance to get the maximum discount. Airfare discounts are good for both the Savannah International Airport and Jacksonville Airport (Florida). Discount car rentals are also good at both airports. See your registration packet for the details.

Looking forward to having everyone in Savannah!! - *Bob Lessnau, Local Arrangements Chair*.

The Votes are In : Results of ASP Member Survey

During the summer, the Board of Directors decided to survey the members of ASP for their preferences on times for the ASP annual meeting. Solicitations were made via mail and email to the ASP membership and via email to Primate-Science subscribers. A total of 251 responses was received between the dates of 28 Aug 00 and 26 Oct 00.

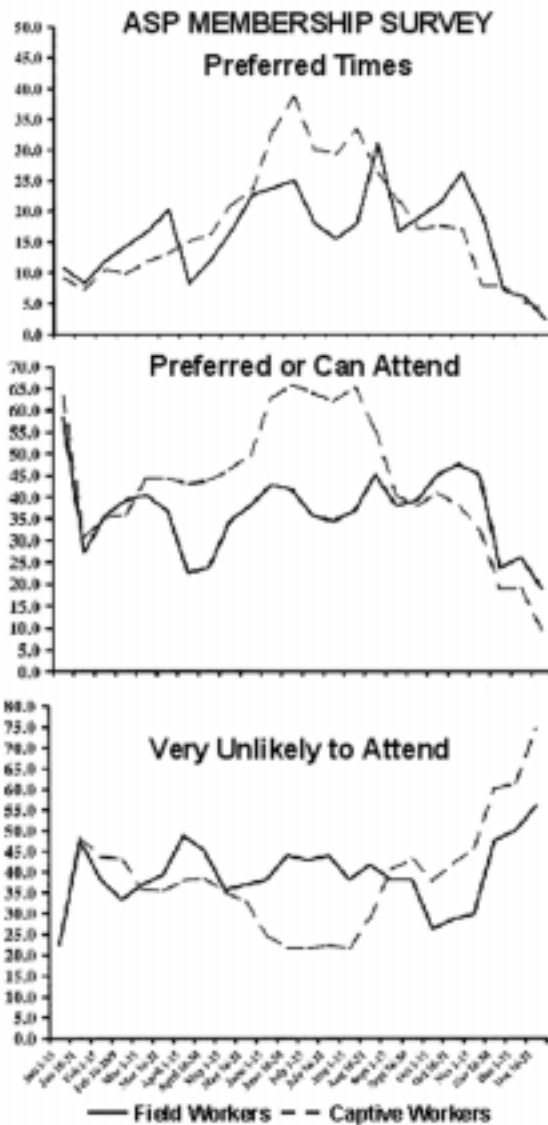
Of the 251 respondents, 27.5% described themselves as 'university/college faculty, teaching', 18.7% as 'research scientist/faculty, non-teaching', 16.7% as 'graduate student', 8.8% as 'research scientist/faculty, teaching', 5.6% as 'postdoctoral researcher', 4.4% as 'undergraduate student', 3.6% as 'technician/caretaker', 2.0% left the answer blank, and 12.7% identified themselves as 'other'. These individuals listed their positions as (among others), trainer, administrator, consultant, research assistant/associate, volunteer, veterinarian, pathologist, retired, and curator. Most of the respondents were ASP members (89.2% vs. 8.8% non-member), most heard about the survey from an ASP mailing (86.1% vs. 12.4% from Primate-Science), and nearly half reported having attended 1-4 meetings of ASP (44.2% vs. 16.3% for no meetings, 17.5% for 5-9 meetings, 7.6% for 10-14 meetings, 7.6% for 15-19 meetings, and 5.6% for 20-23 meetings).

A major goal of the survey was to determine preferred meeting times for individuals who work with primates in field vs. in captive settings. One-third (33.5%) of the respondents indicated their work with nonhuman primates takes place primarily in the field, and 61.0% indicated primarily 'in a captive setting (zoo, lab)'. The remaining respondents indicated either they did not work directly with nonhuman primates or their tissues, worked in both field and captive settings, or left the answer blank. Chi-square analysis indicated differences in meeting attendance between field and captive workers ($p < .05$). Inspection of standardized residuals showed this difference was most apparent for those who attended 20-23 ASP meetings — captive workers were more likely than were field workers to have attended this number of meetings. No other cells showed significant differences.

The bulk of the survey comprised a set of questions asking respondents to indicate, for every semi-monthly period of the year, whether the pe-

riod was a 'preferred time', or to indicate 'I can attend at this time', or 'Very unlikely to attend at this time'. Respondents could choose as many dates as they wanted in each category of response. Figure 1 shows the preferred times for attendance based on whether respondents were primarily field or captive workers. It is worth noting that the strongest preference among field workers was for the August 16-31 period; 31.0% of field respondents indicated this as a preferred time.

Figure 2 shows the periods in which respondents indicated they were 'very unlikely to attend'. Most respondents indicated they were unlikely to attend around the holidays. Field researchers were more likely than captive researchers to indicate they were unlikely to attend during the summer months. Captive



***Circa-Human Anthropoid Dude**

workers were more unlikely to attend from the end of October to mid-November, compared to field workers.

Figure 3 shows those time periods in which respondents indicated EITHER that it was a 'preferred time', or that 'I can attend at this time'. A substantial number of both field and captive workers indicated they could attend an early January meeting. Beyond that date, captive workers indicated they would attend during the summer months, and field workers showed specific peaks for late fall, late summer, early summer, and late winter, in that order.

Finally, 74 respondents provided comments. Twenty-three indicated EITHER that their inability to attend ASP meetings was because of a conflict with field schedules, OR that field schedules should be accommodated in scheduling meetings. A number of other constraints were noted as either affecting a respondent's ability to attend, or as something to consider when scheduling meetings: conflicts with other meetings (n=8); and constraints by school year, family, academic year, teaching schedules, grant deadlines, and grant reviewing schedules (n=13). Eight respondents specifically requested that temperature be considered (e.g., no summer meetings in hot climates), and 5 respondents indicated unhappiness with venues that involved hotels, rather than student housing options. Fewer than three respondents suggested having the meeting at the same time every year; having the meeting in conjunction with other societies' meetings; or having the meeting times alternate from year to year. Two respondents suggested that the Society was too captive-oriented and that more field people should be encouraged to join/attend. And two respondents specifically requested that abstract deadlines not be so early.

The Board thanks all individuals who took the time to respond. The comments will be very helpful as the Society plans its upcoming meetings. - John Capitanio, ASP President.

Reynolds Accepts ASP's President's Award

Earlier this year, the ASP's Awards & Recognition Committee announced that Professor Vernon Reynolds received the first "ASP President's Award". This newly created award is given to individuals or organizations that have made unique and exceptional contributions to primatology.

The award was announced in the June issue of the *ASP Bulletin* and, at our annual conference in Boulder, Charles Southwick read an acceptance letter from Vernon – who was unable to attend the meeting. The award includes a plaque and \$1000.

has included study of the forest itself (effects of logging, reforestation, etc.) and many species of animals inhabiting the forest – including various birds, butterflies, and, of course, chimpanzees and other primates. As an example of the BFP's wide-ranging efforts, they organized "The Second Budongo Conference: Development through Conservation", held in September at nearby Nyabyeya Forestry College. Participants included a wide range of individuals, from dignitaries at the national level to local farmers living near Budongo Forest Reserve. I was honored to be a part of the conference myself and see, first hand, the organization and cooperation involved in protecting the environment for the benefit of all who live in and around the forest.

In September, I traveled to Uganda to make a public presentation of the ASP President's Award. As it happened, September 2000 marked the tenth anniversary of the Budongo Forest Project (BFP), established by Reynolds to provide study and protection of the flora and fauna of the Budongo Forest Reserve in western Uganda. During an anniversary celebration, I was proud to present Vernon with the plaque and congratulate him on behalf of the American Society of Primatologists. Vernon graciously accepted the award and, as is typical, gave all recognition and credit to the hard-working staff of the Budongo Forest Project, directed by Mr. Fred Babweteera. Vernon chose to split the \$1000 award evenly among the staff (see photo).

The Budongo Forest Project is genuinely a forest project. Research conducted via BFP



Congratulations to Vernon and the staff of the Budongo Forest Project. The American Society of Primatologists wishes you many continued years of service to primates and their habitat. - *Janette Wallis, ASP Executive Secretary and Reynolds collaborator.*

Call for Information on Research and Educational Opportunities for Students

The Education Committee of the ASP is soliciting information about research and educational opportunities for students in the summer of 2001. If you can offer a student(s) the valuable experience of participating in a research, educational or conservation effort, please contact **Colleen Schaffner**, Education Committee member at the address below. Please format your submissions to include the following information in the order outlined below:

- 1 Include the name, address, affiliation, phone number, fax number and e-mail address of the person who should be contacted regarding the assistantship/internship/educational opportunity.
- 2 Include a brief description of the project and the duties expected of the assistant/intern/student.
- 3 Please provide the qualifications required for consideration.
- 4 Indicate the length of appointment, including the start and finish dates.
- 5 Include information about any stipends or financial assistance available, or the financial commitment required of the assistant/intern/student;
- 6 Indicate any other pertinent information, such as accommodation restrictions or vaccinations that may be necessary.

Please send your information by January 31, 2001 to: Colleen Schaffner, Department of Psychology, Chester College of Higher Education, Parkgate Road, Chester CH1 4BJ; (fax) +44-1244-375-823; E-mail: c.schaffner@chester.ac.uk . Submissions via e-mail are welcome.

Trea\$ury Note\$

Thanks to all those who have already renewed their ASP and/or IPS memberships for 2001. You should enjoy uninterrupted AJP delivery. If for some reason you don't receive any of the 2001 AJP issues on time, please let me know immediately. The publisher has always used late renewals as an excuse for subscription problems. Thank you again for renewing so promptly; it is good for you and good for ASP.

If you have yet to renew, please do so as soon as is convenient. At the risk of sounding like a broken record...at the risk of sounding like a broken record, the sooner you renew, the lower the probability that delivery of your *AJPs* will be interrupted.

If you are missing any issues of *AJP* for calendar year 2000, please let me know.

Don't forget that if you do not want to receive your *AJPs*, you can donate them to a primatologist in a source country. You will have to pay for the subscription, but if you send me a note that you want to donate the subscription, I will take care of it. If you have a particular primatologist in mind, please provide me with the complete mailing address for that individual. If not, we will choose one for you.

We still have open spots on the ASP Membership and Finance Committee. If you would like to serve on this committee, please let me know. - *Steve Schapiro, ASP Treasurer*

Update on the Office of ASP Treasurer

As you may recall from the minutes of the 1999 Board of Directors meeting, printed in the last Bulletin, the position of Treasurer was vacated prior to Bill Roudebush assuming office. Dee Higley was also unable to assume the post, and so, with the consent of the Board, I re-appointed Steve Schapiro as interim Treasurer until a Special Election could be held. The bylaws require a slate of two candidates to be put forth.

Despite her best efforts, and after contacting a number of prospective candidates, Melinda Novak was unable to find two suitable candidates who were willing to run for the office of ASP Treasurer. Consequently, again with the consent of the Board, I decided that, given the pressing membership-related issues before the Board, it was in the best interests of the Society to re-appoint Steve for the current two-year period, despite the Constitutional violation.

I appreciate Melinda's efforts to resolve this situation, and thank Steve for agreeing to continue in this position. I also hope that members of ASP will consider serving the Society in the future by nominating themselves or others for the next round of elections. - *John Capitanio, ASP President.*

American Society of Primatologists Guidelines for the Ethical Treatment of Nonhuman Primates

The following guidelines were formulated by the ASP Research and Development Committee, for the purpose of providing a public document regarding ASP standards for the use of nonhuman primates in research. The finalized guidelines will be made available to the public on the ASP website, and may be used by the AJP Editor when ethical considerations are an issue.

The stated purposes of the American Society of Primatologists (ASP) are exclusively educational and scientific; specifically, to promote and encourage the discovery and exchange of information regarding primates, including all aspects of their anatomy, behavior, development, ecology, evolution, genetics, nutrition, physiology, reproduction, systematics, conservation, husbandry, and use in biomedical research.

The Society is organized around an interest in primates rather than a specific discipline; ASP members abide by specific guidelines for the use of animals developed by discipline-based organizations such as the American Psychological Association¹, American Society of Mammalogists², Animal Behavior Society³ and the Society for Neuroscience⁴. Because ASP members are grounded in an number of research disciplines, we accept the general applicability of these guidelines to primatological research, however specific recommendations developed by these societies may not address completely the special considerations that apply to working with nonhuman primates.

Despite their varied disciplines, ASP members hold the following general principles in common:

1. The most important of these principles is that we accept the responsibility of stewardship for nonhuman primates, and this responsibility must be reflected in our husbandry practices and research protocols whether in field, laboratory, or other setting.

2. The number of nonhuman primates used in research should be the minimum required for valid research results.

3. Research with nonhuman primates should avoid pain and distress at every opportunity.

4. In all cases, the potential benefits of any research should be evaluated against the potential risks to their nonhuman primate subjects.

5. We should make use of information on a species natural history to improve management and enrich environments, because physical and psychological well-being are essential not only to the health of the animal but also to the validity of the research results.

6. Finally, we recognize that our concern should be extended to nonhuman primates once they have become "surplus" to our research needs. This obligation entails ensuring quality care to the end of their natural lives whenever

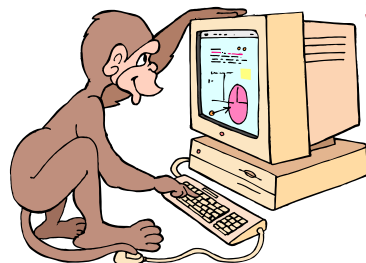
possible, and in the case of rare or endangered species, a diligent search for placements that will contribute to their conservation. While recognizing that some professionals believe euthanasia is an acceptable way to deal with surplus animals in some cases, we strongly urge that other solutions be found whenever possible.

The ASP concurs with guidelines of the International Primatological Society⁵ regarding the acquisition, care and breeding of nonhuman primates, and with the World Health Organization and Ecosystem Conservation Group policy statements⁶ on the use of primates for biomedical purposes. Individuals of endangered species should not be collected in the wild for use in biomedical research, unless the research holds promise for improving the health and conservation efforts on behalf of those species.

ASP members accept the obligation to abide by relevant international, federal, state and local regulations concerning the welfare of captive animals⁷⁻¹¹. ASP members can and should be the strongest advocates for the conservation and humane treatment of primates.

References:

1. Guidelines for Ethical Conduct in the Care and Use of Animals. American Psychological Association, Washington D.C., 1992. <http://www.apa.org/science/anguide.html>.
2. Guidelines for the Capture, Handling and Care of Mammals as Approved by the American Society of Mammalogists, 1998. http://asm.wku.edu/committees/animal_care_and_use/ancarecomm.html.
3. Guidelines for the treatment of animals in behavioural research and teaching. *Animal Behaviour*, 55, 251-257, 1998. <http://www.animalbehavior.org/ABS/Handbook/abspolicy99.html#treatment>.
4. Handbook for the Use of Animals in Neuroscience Research. Society for Neuroscience, Washington D.C., 1997. <http://www.sfn.org/pubs/handbook/>.
5. IPS International Guidelines for the Acquisition, Care and Breeding of Nonhuman Primates: Codes of Practice 1-3. *Primate Report*, 35, 3-29, 1993. <http://www.primatologist.wisc.edu/pin/ips2.htm>.
6. Policy Statement on Use of Primates for Biomedical Purposes: Adopted by World Health Organization (WHO) and Ecosystem Conservation Group (ECG) http://www.enviro.co.za/vervetcare_and_breeding.htm#POLICY_STATEMENT_ON_USE_OF_PRIMATES
7. PHS Policy on the Humane Care and Use of



Shop Amazon.com and Help Primate Conservation

This is a reminder that ASP receives 5% of every purchase made at Amazon **if (and only if) you enter Amazon through the link on the ASP web page.**

All money received will go into the Society's Conservation Fund. Anyone is eligible to enter Amazon.com through our link, not just members. So tell friends and relatives about our link; their purchases (as well as your own) will help primate conservation.

Update:

Amazon.com's "Associates" program earned the ASP's Conservation Fund \$71 during the third quarter of 2000. This was based on almost \$1500 in sales. THANK YOU!!! Please continue to encourage your friends & relatives to shop through the ASP link. Remember: In order to give ASP the credit for your Amazon.com purchase, you MUST enter their web site via ASP's Link: <http://www.asp.org/misc/links.htm>.

- Laboratory Animals. NIH Office for Protection from Research Risks, Rockville, MD, 1986. www.nih.gov/grants/oprr/library_animal.htm
8. The Psychological Well-Being of Non-Human Primates. Institute for Laboratory Animal Research, National Research Council. National Academy Press, Washington D.C. 1998. <http://www.nap.edu/catalog/4909.html>
9. Animal Welfare Act, As Amended (1966 Act plus all amendments through 1990). United States Code, Title 7, Sections 2131-2156. <http://www.nal.usda.gov/awic/legislat/usdaleg1.htm>
10. U.S. Fish and Wildlife Service Endangered Species Act of 1973. <http://endangered.fws.gov/esa.html>
11. Convention on the International Trade in Endangered Species of Wild Fauna and Flora (CITES). Agreement signed in Washington D.C., 1973; amended in Bonn 1979. <http://www.wcmc.org.uk/CITES/eng/index.shtml>

ASP Standing Committees - 2000-2002

In the last issue of the *ASP Bulletin*, the new Chairs of the ASP Standing Committees were identified. As of mid-November, the Chair have completed the selection of Committee members (listed below). The rosters are made up of a healthy mix of laboratory, zoo, and field researchers. "Seasoned" primatologists are joined by a fair number of graduate students. We thank these folks for so generously giving their time to serve the Society. If you have any questions related to these Committees, please feel free to contact the Committee Chair directly.

Awards & Recognition Committee

Gabriele R. Lubach, Ph.D.

Harlow Center for Biological Psychology
Univ. of Wisconsin, 22 North Charter St.
Madison, WI 53715
Tel.: 608-263-3533; Fax: 608-262-6020
E-mail: grlubach@facstaff.wisc.edu
John D. Ruys
Sue Boinski
Julie Worlein
Gerry Ruppenthal
Steve Suomi
Corrine Lutz

Education Committee

Lynne Miller, Ph.D.

Dept. of Anthropology
Univ. of Calif. - San Diego
9500 Gilman Drive
La Jolla, CA 92093
Tel.: (619) 534-6220
E-mail: cebuslem@aol.com
Colleen Schaffner
Leanne Nash
Annie Weaver
Sian Evans
Christine Johnson
Sue Howell
Ken Gold
Nancy Klepper-Kilgore
Kristina Casper-Denman

Conservation Committee

Randall C. Kyes, Ph.D.

Washington Regional Primate Research Ctr.
University of Washington, Box 357330
Seattle, WA 98195-7330
Tel.: (206) 543-3025, 616-9152
Fax: (206) 685-0305
E-mail: rkyes@u.washington.edu
Dean Anderson
Kathy Bentson
Roger Brumbach
Margie Clarke
Carolyn Crockett
Jeffery Froehlich
Will Gergits
Colleen McCann
Matt Novak
Kim Phillips
Juan Carlos Serio Silva

Membership & Finance Committee

Steve Schapiro, Ph.D.

Department of Veterinary Sciences
UTMD Anderson Cancer Center
Bastrop, TX 78602
Tel.: (512) 321-3991; Fax: (512) 332-5208
E-mail: sschapiro@mdanderson.org
Larry Williams
Glover Barnes
Bill Roudebush
Kay Izard
Dick Dukelow
Mike Jurke
Marsha Fernandez
Leila Porter
Jeff Roberts

Program Committee

Tammie Bettinger, Ph.D.

Cleveland Metroparks Zoo
3900 Wildlilfe Way
Cleveland, OH 44109
Tel.: (918) 661-6500 x 214; Fax: 661-3312
E-mail: tlb@clevelandmetroparks.com
Beth Johnson
Chris Kuhar
Darlene Smucny
Jim Paterson
Joe Bielitzki
Kate Baker
Kristen Lucas
Lisa Jones-Engel
Lori Sheeran
Lorraine Smith
Maria Boccia
Marilyn Norconk
Richard Harrison
Sharon Pochron
Joanne Morris

Publications Committee

Melinda Novak, Ph.D.

Department of Psychology
University of Massachusetts, Tobin Hall
Amherst, MA 01003
Tel.: (413) 545-2387; Fax: (413) 545-0996
E-mail: mnovak@psych.umass.edu
Bennett Dyke
Larry Jacobsen
Matt Jorgensen
Bill Mason
Stephanie Parrish
Duane Rumbaugh
Russ Tuttle
& Ex-Officio:
Sally Mendoza (Editor of *ASPe*)
Mike Andrews (Editor of *AJP*)
John Capitanio (Editor of Web page)
Janette Wallis (Editor of the ASP Book Series and *ASP Bulletin*)

Research & Development Committee

J. Dee Higley, Ph.D.

National Institute on Alcohol Abuse and Alcoholism, NIH Animal Center
P.O. Box 529, Building TR112
Poolesville, Maryland 20837
Tel.: (301) 496-8127; Fax: (301) 496-0630
E-mail: higleyd@exchange.nih.gov
Cliff Jolly
Lynn Fairbanks
Jeff Rogers
Jane Phillips-Conroy
Karen L. Bales
Andrew Petto
Stefan Tiefenbacher



Update! ASP Book Series - Special Topics in Primatology

The ASP's Book Series, *Special Topics in Primatology*, has several volumes currently in preparation (see below). In addition, four individuals have suggested topics for future volumes and are in the process of developing official book proposals. Thus, one year from now the series should have four published volumes and at least four volumes in progress.

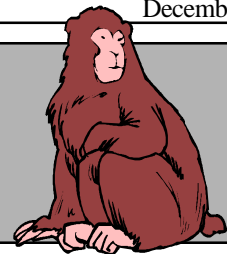
If you wish to suggest a topic for this book series, please contact me. I can provide full details of the procedures to officially propose a volume and guide you through the process of getting started.
– Janette Wallis, ASP Book Series Editor.

Current volumes in the series and their publication dates:

- Volume I: Primate Conservation: The Role of Zoological Parks. Janette Wallis, Editor (1997)
- Volume II: The Care and Management of Captive Chimpanzees. Linda Brent, Editor (late 2000 or early 2001)
- Volume III: The Gibbons of China. Lori K. Sheeran, Editor (Spring 2001)
- Volume IV: Sexual Selection and Reproductive Competition in Primates: New Perspectives and Directions. Clara B. Jones, Editor (Fall 2001)

Plan Now for ASP 2001
8-11 August 2001
Savannah, Georgia

Conservation Conversation



Call for Conservation Award Nominations and Grant Applications

Nominations for Conservation Awards and Grants are now being sought by the American Society of Primatologists (ASP). These awards and grants, funded from the ASP Conservation Fund, are a mechanism to recognize deserving colleagues and students, including those from primate habitat countries – countries with native primate fauna – for whom the prestige of an ASP award or grant can be a valuable aid to the recipient's conservation efforts.

Subscription Award: This award provides the *American Journal of Primatology* to worthy individuals in habitat countries who otherwise would have little access to the scientific literature on nonhuman primates. Preference is given to individuals who will make the journal available for use by students and colleagues. The award is normally granted for a 5-year period. Recipients are requested to submit a brief report every two years summarizing the use of the journal. A nominating letter should describe the nominee's credentials and primate-related activities, and should explain why the nominee deserves to receive high priority consideration.

Conservation Award (\$750): This award provides recognition and financial support for students and young investi-

gators from habitat countries who demonstrate potential for making significant and continuing contributions to primate conservation. Those eligible include students, researchers, and educators from primate habitat countries for whom no more than five years have elapsed since receipt of their terminal degree. Nominators should provide the name, title and full mailing address of their nominee, along with a statement about the nominee's qualifications for the award, focusing on past and potential contributions to primate conservation. A copy of the nominee's vita is requested. Supporting letters from other individuals acquainted with the nominee's work may be submitted. Past awards have been presented by U.S. Ambassadors or other senior officials, thereby obtaining favorable publicity for the award, its recipient, and primate conservation in the recipient's country.

Conservation Small Grants (up to \$1,500): Grant proposals are solicited for conservation research or related projects, including conservation education. ASP and IPS members working in habitat countries are especially urged to apply or to help someone from a habitat country submit a meaningful project which can be a

portion of a larger effort. Grant applications may be obtained by contacting the ASP Conservation Committee Chair at the address below or from the conservation section on the ASP web page (www.asp.org). Recipients of grants must agree to submit a brief report (maximum 1 page, single spaced), in a form suitable for publication in the *ASP Bulletin*, to the chair of the ASP Conservation Committee within 6 months of completing the project.

Evaluation and Application Procedure: With the exception of requests for emergency support, which can be considered at any time, the Conservation Committee will make its recommendations for awards and grants to the ASP Board of Directors at the annual meeting. Successful nominees and applicants will be informed following the meeting and their names will be published in the *ASP Bulletin* and posted on the ASP web page. The **2001 deadline** for submission of nominations and grant proposals is **June 8, 2001**. All materials should be mailed or faxed (206-685-0305) to Randall C. Kyes, Chair, ASP Conservation Committee, Regional Primate Research Center, Univ. of Washington, Box 357330, Seattle, WA 98195 - *Randy Kyes, Conservation Committee Chair*

Primate Conservation in Nepal

During a recent trip to Nepal (September 2000), I was able to visit Dr. Mukesh Chalise, recipient of the 1996 ASP Conservation Award, and recent recipient of an ASP Conservation Small Grant Award for his project entitled "Survey of Assamese monkeys in Langtang National Park, Nepal." Favorable weather conditions permitted a visit to his field site in Langtang National Park. We were accompanied by his co-investigator Jhamak Karki, Warden of Langtang National Park, and his Research Assistant, Minesh Ghimire.

During a preliminary survey, we encountered a group of approximately 20 Assamese macaques (*Macaca assamensis*) at an elevation of 2200m. The group was resting and feeding in the trees and along the grassy slopes of the steep mountainside (see photo). Dr. Chalise's research and educational efforts are having a significant impact on the conservation of primates in Nepal. - *Randy Kyes, ASP Conservation Chair*



Langtang National Park. The box outline indicates the location where the Assamese macaques were spotted. (Photo: R. Kyes)

Presentation of the 1999 ASP Conservation Award

On 28 July 2000, I had the opportunity to formally present the 1999 ASP Conservation Award to Rondang Siregar, a dedicated biologist from Indonesia, who has played a leading role in efforts to rehabilitate confiscated young orangutans and reintroduce them back to the wild.

The ceremony was held at the main offices of the Primate Research Center at Bogor Agricultural University in Bogor, Indonesia. A number of government, university, and primate center staff were in attendance.

Rondang is completing her PhD at the University of Cambridge, UK and is currently on site at the Wanariset Orangutan Reintroduction Project in East Kalimantan, Indonesia, conducting her research. - *Randy Kyes, ASP Conservation Chair.*



Pictured from left to right, Dr. Jito Sugardjito, Head of Institutional Collaboration and Information Services, Indonesian Institute of Science, Dr. Dondin Sajuth, Director, Primate Research Center, Bogor Agricultural University, Rondang Siregar, MPhil., Dr. Randy Kyes, Chair, ASP Conservation Committee. (Photo courtesy R.Kyes)



Fund for Animals Hails Congressional Passage of Historic Measure to Protect Great Apes

WASHINGTON, DC (Friday, October 20, 2000) — Last night, the US Senate unanimously passed the Great Ape Conservation Act, HR 4320. This legislation, authored by Congressman George Miller (D-CA), creates a federal fund of up to \$5 million from which grants will be made to conservation projects protecting great apes — gorillas, chimpanzees, bonobos, orangutans, and gibbons — in their natural habitat. The House of Representatives overwhelmingly passed HR 4320 in late July, and the legislation now heads to President Clinton, who is expected to sign it.

Christine Wolf, director of government and international affairs for The Fund for Animals, who testified before the House Resources Committee on the bill, stated, "This bipartisan legislation will provide much needed assistance to great ape conservation projects in Africa and southeast Asia. For the Mountain gorilla, of whom only 620 remain, this funding will bolster their chances in a desperate struggle against extinction."

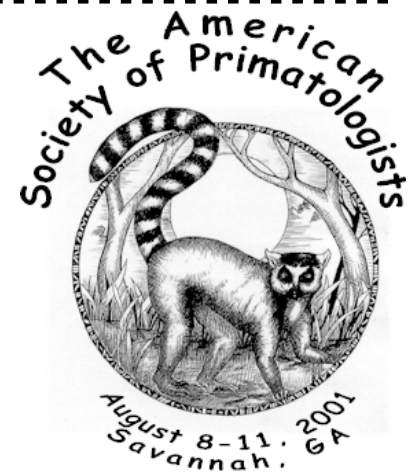
All over the world, chimpanzees, gorillas, bonobos, orangutans, and gibbons are disap-

pearing at lightening speed due to habitat destruction and hunting for the bushmeat trade. Logging concessions are continually cropping up in previously uncharted sections of forest, providing access to these rare animals, and leading to their destruction.

Added Wolf, "The Great Ape Conservation Act comes at a time when we are seeing the unchecked extermination of our closest genetic relatives. I have had the privilege of spending time with the apes in the wild, and when I look in their eyes I see that our future is inextricably linked with theirs."

This Great Ape Conservation Act is modeled after three existing conservation funds which are administered by the US Fish and Wildlife Service: the African Elephant Conservation Act, the Asian Elephant Conservation Act, and the Rhino and Tiger Conservation Act.

- Christine Wolf, Director of Government and International Affairs, The Fund for Animals, World Building, 8121 Georgia Ave., Suite 301, Silver Spring, MD 20910 USA; Tel.: (301) 585-2591 ext. 208; Fax: (301) 585-2595; e-mail: CWolf@fund.org; web: www.fund.org.



ASP Commemorative T-Shirt

Savannah, Georgia, August 8-11, 2001
All cotton T-shirts will be available at the Savannah meeting. The T-shirt will be white with the above logo on a white background with black lettering. The logo will be printed on the back (large in center) and on the front (small on the upper left side). Only limited numbers will be available so pre-order your T-shirt on the registration form. Sizes are small, medium, large, x-large, and xx-large. Shirts are \$15 each.

To learn more about the American Society of Primatologists' Conservation Grants, see the web site at:
www.asp.org
(and follow the links marked "Conservation").

Bulletin & Board

CRUIKEY!!!

It's almost time for IPS. Are you ready?



This is a reminder for the XVIIIth Congress of the International Primatological Society, to be held in Adelaide Australia from 7 to 12 January 2001. Remember you can register in a number of ways: online from our website (100% safe), or print off a registration form and fax direct to us, or let us know if you need a printed registration form.

Our website is located at www.primates.on.net. If you have questions, please contact Graeme Crook at APS_Editor@msn.com.au. We look forward to welcoming you to Adelaide. *Regards, Trevor Keeling and Pam Hammond, Conference Managers, Conventions Worldwide, P O Box 44, RUNDLE MALL, South Australia 5000; Tel: 61 + 8 + 8370 0577; Fax: 61 + 8 + 8370 0281; Email: cww@camtech.net.au.*

Announcing a new web site devoted to sharing ideas for nonhuman primate enrichment.

The site is meant to be a "how-to" site only. I.e., it does not replace or compete with E-mail discussion lists or the scientific literature. Instead, it supplements them. It's a resource for illustrating the step-by-step instructions that are otherwise difficult to describe in e-mails and often not appropriate for publication in scientific journals.

Take a look at the site and consider offering your ideas for primate enrichment. Note: The site is still in developmental stages. Additions and updates will be made on a regular basis. - Janette Wallis and Deborah Hartley, Site Managers.



<http://primate-enrichment.net>

In Memoriam - Denise Abigail Wardill Vasseur

Denise Abigail Wardill Vasseur died on September 29, 2000, in southern California. She was 31 years old. Born in Newcastle, U.K., Denise began her studies of primates at the University of Stirling under Bill McGrew. After her graduation with honors, she worked at the Scottish National Zoological Park and then became a volunteer at the Jane Goodall Institute's refuge for orphaned chimpanzees in Burundi. In 1996 she settled with her husband in the San Diego area and soon thereafter she began working on a Master's Degree at California State University, San Marcos. She also became a keeper at the San Diego Wild Animal Park, a job she dearly loved. Denise was working on her thesis at the time of her death. It was to have been a study of laterality in bonobos. Denise was loved and respected by her fellow students, workers, and teachers. Many of you met Denise at ASP meetings, which she attended in both New Orleans and Boulder. Denise was devoted to primates and to primatology, and would certainly have become an active member of our research and professional communities as she progressed through her education. The death of a young person is always tragic, and Denise is greatly missed. The circumstances of her death are under criminal investigation, and a suspect is in custody in San Diego. - Nancy Caine

Primate Center Library Receives Major NIH Grant

The Wisconsin Regional Primate Research Center Library learned Aug. 15 that it will receive one of the largest NIH grants ever awarded to a Primate Center library. The \$2.5 million, five-year grant from the National Center for Research Resources will boost the library's staff and resources so that it can more effectively work with the eight NCRR Primate Centers as well as the greater primatological research community.

Specifically, the grant will allow the library to work cooperatively with the Primate Centers to coordinate information services for research and affiliate staff and to promote information sharing. Included will be coordination of collections; rapid sharing of information among the centers through electronic document transfer; development of a centralized information services menu; establishment of the Primate Information Center's (PIC) PrimateLit database as a freely available Web-based resource; development of Primate Info Net (PIN) as an Internet access tool; and sharing of research and educational expertise of RPRC staff with the scientific community and general public.

This fall, PIC's PrimateLit database will move from the University of Washington to the University of Wisconsin-Madison. The GLS's Library Technology Group will provide Web-based public access and technical support. PIC will continue to index the primatological literature through a subcontract with the WRPRC.

"This is a unique and challenging opportunity to use the World Wide Web to deliver information services to the broad primatological research community," said WRPRC Chief Librarian Larry Jacobsen. "It builds on the strengths of UW Libraries — their collections, expertise and commitment to sharing research findings with an international audience. Increased access to information about the primates will benefit both the public and, ultimately, the nonhuman primates themselves." (From Primate-Science)

Plan Now for ASP 2001
8-11 August 2001
Savannah, Georgia

Call for Award Nominations

On behalf of the ASP, the Awards and Recognition Committee is soliciting nominations for three awards:

1) The **DISTINGUISHED PRIMATEOLOGIST AWARD**

This award honors a primatologist who has had an outstanding career and made significant contributions to the field. Five previous individuals have been awarded this most prestigious honor by the Society. Nominations should be in writing and must include a vitae and a narrative that describes the nature and extent of the nominee's contribution to primatology. Nominations must also include at least two letters of support submitted on behalf of the nominee.

2) The **DISTINGUISHED SERVICE AWARD**

This award is not presented on any regular basis but is presented to deserving individuals who have contributed long-term service to the Society. Nominations should include at least one letter of support in addition to the nomination letter describing the nominee's contributions.

3) The **SENIOR RESEARCH AWARD**

This is a new award and replaces the Senior Biology and Conservation Award formerly administered by the Conservation Committee. This award honors individuals who, because of their dedication to their profession and their productivity, have made significant contributions to research activities supporting or enhancing knowledge relevant to primatology. Such contributions could take place in laboratories, the field, or in zoological gardens. The award is reserved for those who have not received the highest degree offered in their field (e.g., Ph.D., M.D., D.V.M.) but are deserving of the Society's recognition for their achievements. Nominations should include a nominating letter and two supporting letters indicating the contributions of the individual, along with a narrative describing the impact on the field. Nominees need not be members of the ASP to be considered.

Nominations for any of the three awards must be received by **June 1, 2001**. Awards will be announced at the meeting in Savannah.

An "Intent to Nominate" form has been provided to encourage nominations prior to having all of the supporting documentation available. The A&R Committee will follow up on all nominations.

Gabriele R. Lubach, Ph.D., Chair, Awards & Recognition Committee, Harlow Primate Laboratory, University of Wisconsin, 22 North Charter St., Madison, WI 53715: E-mail: grlubach@facstaff.wisc.edu; Tel.: (608) 263-3533; Fax: (608) 262-6020.

ASP AWARDS & RECOGNITION COMMITTEE

Intent to Nominate Form

Name of Award _____

Nominee _____

Brief Statement of Qualifications _____

Nominator _____

Address _____

E-mail _____

Phone _____

Fax _____

For Committee consideration, this form must be followed up with a formal letter of nomination and other relevant information as indicated in the guidelines. All necessary items must be received by the A&R Committee by **June 1, 2001**. This form will soon be available on the ASP web site, along with updated information on the awards.

Mail form to:

Gabriele R. Lubach, Ph.D., Chair
Awards & Recognition Committee
Harlow Primate Laboratory
University of Wisconsin
22 North Charter St.
Madison, WI 53715

E-mail: grlubach@facstaff.wisc.edu
Tel.: (608) 263-3533 ; Fax: (608) 262-6020

This Award Nomination Form is also available on
the ASP Web Page at:

<http://www.asp.org/Awards/RequestAwardNominations2001.html>

Note: If you are also renewing your ASP membership via the form on the reverse side, please mail the entire sheet to ASP Treasurer, Steve Schapiro, and he will forward your Award Nomination Form to Gabe Lubach. See Schapiro's address on reverse side.



Membership Form 2001

AMERICAN SOCIETY OF PRIMATOLOGISTS

Important Notice: Again this year, all full and student payments to ASP include an annual subscription to the *American Journal of Primatology*

Membership in ASP is open to persons engaged in the scientific study of primates and to those interested in supporting the goals of the Society as described in the Constitution (<http://www.asp.org/misc/constitution.htm>). Submission of this application indicates your support of these goals.

Please type or print clearly

Last name: _____

First name: _____

Address: _____

City: _____

State: _____ Zip: _____

Country: _____

Telephone: _____

Fax: _____

e-mail: _____

Specialty in Primatology: _____

Please Note: The information listed above will be included in the 2001 ASP Directory, and made available to all members. If you wish any information to remain confidential (e.g., phone numbers), please do not fill out the blank. All information requested at the bottom of this form will be treated anonymously. The information is requested for the purpose of assessing ASP membership trends.

- Discipline of terminal degree (e.g., Zoology, Anthropology)
- Decade terminal degree was (will be) awarded:
_ 50 _ 60 _ 70 _ 80 _ 90 _ 00
- Current area of research interest (please check the **one** term that best characterizes your interests):

<input type="checkbox"/> Behavior	<input type="checkbox"/> Husbandry/Management
<input type="checkbox"/> Ecology	<input type="checkbox"/> Medical Primatology
<input type="checkbox"/> Reproduction	<input type="checkbox"/> Biomedical
<input type="checkbox"/> Conservation	<input type="checkbox"/> Taxonomy
<input type="checkbox"/> Anatomy/Morphology	<input type="checkbox"/> Cognition
<input type="checkbox"/> Genetics	<input type="checkbox"/> Other (specify)
<input type="checkbox"/> Communication	<input type="checkbox"/> Enrichment
<input type="checkbox"/> Neurobiology	<input type="checkbox"/> Physiology
- Gender: ___ F ___ M

Please check all that apply:

- ASP Dues (Full)* \$ 85¹
- ASP Dues (Student)* \$ 53²
- ASP Dues (Retired) \$ 15

does NOT include an annual subscription to the *American Journal of Primatology*

- IPS Dues (Full)* \$ 20
- IPS Dues (Student)* \$ 10

* Membership in ASP and IPS for individuals from source or less developed countries free to those unable to pay dues.

- Foreign postage (outside N. America) \$ 45.50

for *American Journal of Primatology*

- ASP Conservation Fund \$ _____

Members are reminded it costs ASP \$4 to process credit card payments. Please consider adding this much (or more) to your total.

- Please add \$ _____ to my total to help ASP offset credit card processing costs. \$ _____

TOTAL (in US\$) \$ _____

- Check or Money Order or Credit Card (Visa or Mastercard only)

Acct #: _____

Expiration date: _____

Signature of Card Holder: _____

Please make check payable to:
American Society of Primatologists

Send payment to:
Steven J. Schapiro, Treasurer, ASP
Dept. of Veterinary Sciences
UTMDACC
650 Cool Water Dr.
Bastrop, TX 78602-9733
(512) 321-3991 (512) 332-5208 (fax)
sschapiro@mdanderson.org

- Employment environment (please check **one**):

<input type="checkbox"/> College/University	<input type="checkbox"/> Zoological Park
<input type="checkbox"/> Private research	<input type="checkbox"/> Corporation
<input type="checkbox"/> Regional Primate Center	<input type="checkbox"/> Student
<input type="checkbox"/> State/Federal research laboratory	<input type="checkbox"/> Non profit Corp.
<input type="checkbox"/> Medical School	<input type="checkbox"/> Other (specify)
<input type="checkbox"/> Library	<input type="checkbox"/> Private consultant
<input type="checkbox"/> Museum	<input type="checkbox"/> State government

¹ \$55 of the full member fee is for a 1-year subscription to *AJP*
² \$38 of the student member fee is for a 1-year subscription to *AJP*

Employment Opportunities in Primatology and Related Fields

Director. Yerkes Regional Primate Research Center. Emory University seeks a new Director of the Yerkes Regional Primate Research Center who will provide dynamic, scientific leadership to and administrative oversight of the Center's ongoing research resources and scientific programs. The Director reports to the Executive Vice President for Health Affairs. Emory University, a private university, has an enrollment of over 11,000. The Woodruff Health Sciences Center (WHSC) encompasses four academic divisions: the School of Medicine, the Nell Hodgson Woodruff School of Nursing, the Rollins School of Public Health, and the Yerkes Center. Emory Healthcare is the clinical arm of the WHSC. The Yerkes Center, one of eight regional primate research centers sponsored by the National Center for Research Resources of NIH, is dedicated to basic and applied biomedical and behavioral research with nonhuman primates and other animal models when appropriate. The four major research areas include microbiology and immunology, neuroscience, psychobiology, and visual science. Qualifications: a doctoral degree in a health sciences discipline; tenurable at the rank of full professor; significant scientific accomplishments including a minimum of ten years of academic scholarship/leadership; a national reputation as a scientist, preferably involving the study of nonhuman primates; a collegial and collaborative management style. James L. Madara, M.D., Chair of the Search Committee, requests that nominations, applications, and requests for additional information be directed to the University's consultant: Paula Carabelli, EMN/Witt/Kieffer, 1920 Main Street, Suite 310, Irvine, CA 92614; Tel.: (949) 797-3536; Fax: (949) 851-2412; E-mail: paulac@wittkieffer.com. Each candidate is asked to submit a letter of interest; a current CV and bibliography; and the names, positions, and phone numbers of five references who will be contacted only with the candidate's approval. Screening will begin immediately and continue until an appointment is made. Emory University is an EEO/AA Employer.

Assistant Professor - Psychobiology; Integrative Animal Behavior. University of Nebraska at Omaha. The Psychology Department, University of Nebraska at Omaha invites applications for a tenure-track Assistant Professor with emphasis on the mechanisms of behavior. UNOmaha and the Psychology Department are committed to achieving diversity among faculty and staff. Persons from underrepresented groups, women, and persons of color are particularly encouraged to apply. UNOmaha is also supportive of dual-career couples, and we invite applications accordingly. The successful candidate will conduct research at the interface between proximate

and ultimate levels of analysis, and will develop a fundable research program. Research area in molecular, neuroendocrine, or physiological approaches to the study of behavior is preferred, although candidates in all areas are encouraged to apply. The successful candidate will teach and train students in the departments degree programs (BA/BS, MA, and PhD). Scientists with a completed Ph.D. (post-doctoral experience preferred) may apply by sending a cover letter, CV, representative publications, statement of teaching philosophy and interests, and 3 reference letters to Dr. Kenneth Deffenbacher, Chair, Psychology Department, University of Nebraska at Omaha, Omaha NE 68182-0274. Contact: jfrench@unomaha.edu. **Deadline: 1 December 2000.**

Professor of Biological Anthropology (rank open), University of Texas at San Antonio. The University of Texas at San Antonio anthropology program invites applications for a tenure track or tenured position (rank open) in biological anthropology to begin Fall 2001. Applicants should have research interests focusing on human biological diversity, especially with biomedical applications broadly defined, including specializations such as population genetics, primate studies, human skeletal biology, human growth and development, or hominid evolution. Responsibilities include teaching general anthropology, basic courses in biological/physical anthropology, & elective courses in area of specialization; on-going research; & service in a dynamic program offering both an undergraduate and graduate major. Contact for details on qualifications. Tenure-track or tenured 9 month appointment. **Deadline: January 8, 2001.** Applicants should submit a letter of application indicating the rank applied for and including a statement of teaching and research interests, a C.V., and three letters of recommendation. All materials (with the exception of recommendation letters) must be postmarked by January 8, 2001, and mailed to Dr. Richard E.W. Adams, Search Chair, Division of Behavioral & Cultural Sciences, 6900 North Loop 1604 West, University of Texas at San Antonio, San Antonio, TX 78249-0652. Applicants who are not U.S. citizens must state their current visa and residency status. The University of Texas at San Antonio is an AA/EEO employer. Women and minorities are encouraged to apply.

Assistant or Associate Professor. Bucknell University Department of Psychology and Program of Animal Behavior seeks a primatologist for a tenure-track appointment at either the assistant or associate level rank (with a maximum of three years credit toward tenure). Preference will be given to candidates who conduct noninvasive or minimally invasive re-

search with long-term socially-maintained groups. Indoor/outdoor facilities exist to house several species of primates, except for great apes. Research must have potential to attract and involve undergraduate and master's students. Teaching assignment includes core courses in both psychology and animal behavior at the introductory, intermediate, and advanced levels of the curriculum, as well as courses in the general education curriculum. Other teaching assignments depend on candidate's particular area of expertise, but may include psychology courses in cognition, perception, learning, physiological, developmental, social, personality, or abnormal. Applicants must have Ph.D. or be able to complete it by 9/01. Bucknell is a highly selective, primarily undergraduate (3400 undergraduates and 250 masters students) institution, combining a strong liberal arts tradition with characteristics of a comprehensive university. Send vitae, materials demonstrating evidence of success or promise at teaching and research, and 3 letters of reference to: Primatology Search Committee, Department of Psychology, Bucknell University, Lewisburg, PA 17837. Applications will be reviewed beginning **30 November 2000**/ Bucknell encourages applications from women and members of minority groups (EEO/AA). Contact: (570) 577-1200 or E-mail daubman@bucknell.edu for more information.

Veterinary Pathologist, Oregon Health Sciences University. The Department of Comparative Medicine, Oregon Health Sciences University, invites applications for a full time position in anatomic pathology in the Division of Animal Resources at the Oregon Regional Primate Research Center, which is located about 9 miles west of Portland, OR. Primary responsibilities are for diagnostic pathology and support of biomedical research in the areas of reproductive biology, neuroscience, and infectious disease. Caseload is derived primarily from the center's population of approximately 2700 nonhuman primates. Candidates must hold a DVM (or equivalent) degree and be ACVP board certified or eligible. Strong preference will be given to candidates with experience in the pathology of nonhuman primates and other laboratory animals. Salary commensurate with experience. Term of Appointment: 12-month renewable contract. Applications will be accepted until a suitable candidate is selected. Questions may be directed to Anne Lewis, DVM, PhD, Head of Pathology Services, ORPRC at 503-690-5356; E-mail: lewisann@ohsu.edu. Contact: J Connor, Oregon Regional Primate Research Center/Oregon Health Sciences University, 505 NW 185th Avenue, Beaverton, OR, USA 97008; Tel.: (503) 690-5211; E-mail address: connorj@ohsu.edu.

Employment Opportunities (cont.)

Assistant Professor. Yale University, Department of Anthropology, is seeking to fill a position in Biological Anthropology at the level of Assistant Professor, beginning 1st July 2001. Research specialization should be in the anatomy and evolution of primates (hominid or non-hominid; fossil or extant), and should complement interests currently represented in the Department. Send CV, names of referees, and a statement of teaching and research interests to: Chair, Biological Anthropology Search Committee, Department of Anthropology, Yale University, P.O. Box 208277, New Haven, CT 06520-8277, before **15th December 2000**. Yale University is an EO/AA Employer. Contact: Chair, Biological Anthropology Search Committee, Department of Anthropology, Yale University, PO Box 208277, New Haven, CT 06520-8277, USA.

Ethology/Animal Behavior, Department of Zoology, University of Wisconsin-Madison. The Department of Zoology invites applications for a tenure-track position as Assistant Professor, beginning August, 2001. Applicants must have a Ph.D. degree and a history of publication in the area of experimental Ethology and/or Animal Behavior. Teaching will include courses at undergraduate and graduate levels. Information may be found at <http://www.wisc.edu/zoology>. Please send CV, statement of research and teaching interests, copies of three publications, and three letters of recommendation sent via post to: Chair, Ethology Search Committee, Department of Zoology, 430 Lincoln Drive, University of Wisconsin-Madison, Madison, WI 53706; Tel.: (608) 262-2648 or (608) 262-1051; Fax: (608) 265-6320; Email: maharri1@facstaff.wisc.edu or zoology@macc.wisc.edu. Only applications submitted by mail will be accepted. No email submissions accepted. **Deadline: 20 January 2001.** An Equal Opportunity/Affirmative Action Employer. Women and minorities are encouraged to apply. Unless confidentiality is requested in writing information regarding applicants must be released upon request. Finalists cannot be guaranteed confidentiality.

Head of an Independent Junior Research Group, Max Planck Institute for Evolutionary Anthropology. The position is a fulltime research position and has associated with it funds for conducting research – including positions for a second Ph.D. scientist (BAT IIa) and two technical assistants. The appointment will be for a term of five years. The Institute has four departments, including the Department of Primatology (Christophe Boesch, Director). More information may be obtained at <http://www.eva.mpg.de/> Research interests should focus on the evolution of culture and social learning in animals, except from great apes that

are covered by the already existing departments of the Institute. For example: Behavioural and cultural differences between populations and species, imitation and social learning mechanisms. The salary will be at the C2/C3 level on the German university scale, equivalent to an assistant/associate professor. Applications including a CV, a detailed research plan and the names of three referees must be received by **December 1, 2000**. Qualifications: Ph.D. and many years of research. Leila Kunstmann, Max Planck Institute for Evolutionary Anthropology, Dept. of Primatology, Inselstrasse 22, 04103 Leipzig, Germany; Tel.: +49-(0)341-9952-200; Fax: +49-(0)341-9952-119; E-mail address: kunstmann@eva.mpg.de.

PreDoctoral Research Assistant in Development. The National Institute of Child Health and Human Development, Laboratory of Comparative Ethology, has an opening for a research assistant to work on a team investigating physiological and behavioral effects of rearing conditions on the behavior of rhesus monkeys across the life span. The position is funded by the intramural research program at the National Institutes of Health and offers extensive training opportunities that include laboratory resources, opportunity for collaboration, a guest speakers' series that features top investigators in developmental research and the possibility to present research at national conferences. Research experience with nonhuman primates or other animals is an asset, but not required. The successful applicant will have previous research experience and coursework in experimental psychology or other related disciplines, e.g. experimental methods and design, statistics, behavioral pharmacology, experimental analysis of behavior, learning and memory. Strong communication and organizational skills are necessary. Enthusiasm for working closely with rhesus monkeys is required. The position is full-time for 1-2 years for an individual with a B.A., B.S., or M.S. and with U.S. citizenship or permanent residence. Stipend levels are based on education level and the position includes health insurance. Interested applicants should contact: Peter J. Pierre, Ph.D., Laboratory of Comparative Ethology, National Institutes of Child Health and Human Development, National Institutes of Health: Animal Center, 17610 Elmers School Road, Box 529, Poolesville, MD 20837; pierrep@mail.nih.gov.

Predoctoral Research Assistant in Primate Cognition. The National Institute on Alcohol Abuse and Alcoholism has an opening for a research assistant to work on a team investigating physiological and behavioral aspects of temperament and cognition in rhesus monkeys as part of ongoing behavioral genetics studies. The position is funded by the intramural re-

search program at the National Institutes of Health and offers many excellent training opportunities through hands-on research experience, involvement in collaborative efforts with other NIH scientists and laboratories, and extensive seminar and lecture series. The successful applicant will have previous research experience or coursework, as well as strong communication skills and willingness to participate in multiple research projects as part of a collaborative team. Strong organizational abilities, flexibility, and enthusiasm for working closely with rhesus monkeys are necessary. Experience and coursework in psychology, experimental methods and design, statistics, behavioral pharmacology, behavioral neuroscience, or comparative psychology preferred. Research experience with nonhuman primates or other animals is an asset, but not required. The position is full-time for 1-2 years for an individual with a B.A., B.S., or M.S. and with U.S. citizenship or permanent residence. Stipend levels are based on education level and include health insurance. The position includes the potential to present research findings at intramural and national research meetings, and to co-author research publications. The position is full-time for 1-2 years for an individual with a B.A., B.S., or M.S. and with U.S. citizenship or permanent residence. Stipend levels are based on education level and include health insurance. Position open until filled. Dr. Allyson Bennett, National Institute on Alcohol Abuse and Alcoholism, NIAAA, NIH Animal Center Bldg 112, Rm 20, P.O. Box 529 Fisher Avenue, Poolesville, MD 20837, USA; Tel.: (301) 496-9550; Fax: (301) 496-0630; E-mail: allysonb@niaaa.nih.gov. NIH is an Equal Opportunity Employer. Applications from women, minorities, and persons with disabilities are strongly encouraged. The DICBR/NIAAA is a smoke-free environment.

Veterinary Technician II (128024), Emory University (Human Resources). Assists the veterinarians and researchers in surgery and radiology, animal care, treatments, and diagnostic and preventative procedures. Maintains medical records and inventory. Provides non-surgical technical assistance to researchers as directed. Qualifications: A high school diploma or equivalent. Four years of experience as a veterinary technician OR a high school diploma or equivalent and four years of experience as an animal care technician OR graduation from a two year veterinary technician program and two years of veterinary technician experience. Salary Range \$24,000 - \$30,000. Term of Appointment: Full Time with full benefits. Application taken until filled. The position is located in the Division of Animal Resources, Rollins Research Center. Contact: Frank Leist, Senior Recruiting Specialist Emory University

Employment Opportunities (cont.)

(Human Resources), 1762 Clifton Road, Atlanta, GA 30322 USA; Tel.: (404) 727-7611; Fax: (404) 727-1922; E-mail: www.emory.jobs.

Laboratory Animal Technician, Oread Inc. Oread, a leader in contract drug discovery and development, has the following immediate opening at its Biosafety Center in Farmington, Connecticut. We are looking for candidates who are seeking a career opportunity in a fast paced, entrepreneurial environment. Successful applicants will provide the necessary husbandry and environmental enrichment for common laboratory animals including rodents, rabbits, dogs and nonhuman primates. The successful candidate will perform technical aspects of study protocols including animal restraint and handling, test article administration and sample collection using standard laboratory equipment. Candidates should possess excellent attention to detail, strong communication and interpersonal skills and an ability to work equally well independently or as part of a project team. Minimal educational requirements include an Associates degree in Animal Science or related science or relative experience. AALAS certification is highly desirable. Experience working with rodents, dogs and nonhuman primates is ideal. Knowledge of GLPs, Microsoft Word and spreadsheet programs is useful. Oread offers a competitive salary and benefits package including 401(K). Term of Appointment: Immediate. Application Deadline: None. For consideration in this dynamic high growth company, please fax or mail resume and salary requirements to: Human Resources, Oread Biosafety Center 400 Farmington Ave., Farmington, CT, 06032; Tel.: (860) 674-6300; Fax: (860) 676-9443.

Animal Caretaker, Wildlife Rescue & Rehabilitation, Inc. Responsible for the ongoing care of birds, mammals, and reptiles ranging in age from infant to elderly. Duties include feeding orphaned babies, cleaning enclosures, preparing food, and monitoring health and well-being of individual animals. Since we are looking for people who have a desire to grow with Wildlife Rescue, we are asking for at least a 1 year commitment from all applicants. Once accepted and trained, you will be expected to give your input on the care and enrichment of all animals living at the sanctuary, as well as ideas and help with the compilation of written protocols, procedures, etc. Also accepting interns (in some cases, a small stipend is available). It is important that you be able to perform multiple tasks simultaneously, enjoy working with people, and thrive in an environment that is often hectic and frenzied. We are seeking people who have a basic common sense about animal care and animal behavior. Important qualities include (but are not limited to) being able to

judge when an animal is uncomfortable in his/her surroundings, too hot or cold, or in need of enrichment. Salary/funding: \$6.50/hr. Application Deadline: Open. Contact: Danielle Slaughter, Wildlife Rescue & Rehabilitation, Inc., 110 Los Indio Ranch Rd, Boerne, TX USA 78006; Tel.: (830) 336-2725; Fax number: (830) 336-3733; E-mail: wrr78@gvtc.com.

Chimpanzee Caregiver, Primate Foundation of Arizona. Assists in the total daily care of approximately 76 chimpanzees. Qualifications: Requires two years of college level course work, two years experience in the care of exotic animals, or an equivalent combination of experience which provides the required knowledge, skills and ability. Primate experience is a plus. Must be willing to make a two-year commitment. Salary/funding: \$17,680/year. Application Deadline: Open until filled. Contact: Jim Murphy, Primate Foundation of Arizona, P.O. Box 20027, Mesa, Arizona USA; Tel.: (480) 832-3780; Fax: (480) 830-7039.

Primate Keeper, International Center for Gibbon Studies (ICGS). Primate keeper, collect and enter behavioral data (on Macintosh) on approximately 35 captive gibbons, assist with routine yearly exam, occasional grounds maintenance. Qualifications: Love of animals; hardworking; honesty; dedication; computer literacy; knowledge of, or willingness to learn, cage building and gardening skills. We require a variety of vaccinations and medical tests to ensure the gibbons' and volunteers' health. **No stipend**. Housing is provided. Term of Appointment: One month minimum. Application Deadline: none. ICGS is a non-profit organization and the only facility in the world devoted exclusively to the study, preservation and propagation of these endangered lesser apes, the gibbons, by establishing secure captive gene pools in case attempts to preserve species in the wild fail. Contact: Patti Dahle, Volunteer Coordinator, International Center for Gibbon Studies, P.O. Box 800249, Santa Clarita, USA 91380; Tel.: (661) 943-4915; Fax: (661) 296-1237; E-mail: gibboncntr@aol.com.

If you wish to announce a job opening or upcoming conference in the next *ASP Bulletin*, please contact the Editor:
Janette Wallis: (405) 271-5251, ext. 47612;
janette-wallis@ouhsc.edu.

DEADLINE for the March issue of the *ASP Bulletin* is
February 16th.

For job opportunities, include:

- application deadline
- qualifications
- job responsibilities
- salary range
- contact information

For conferences, include:

- full dates and location
- focus of conference
- registration deadline
- registration fees and other expenses
- contact information



Employment Opportunities (cont.) - FIELD WORK

Field Assistant – Madagascar. The Ranomafana Fragments Project seeks to examine the role of behavior, and evolutionary constraint on behavior, on the ability of species to survive habitat fragmentation. The Project team works in forest fragments in the South Eastern rainforests of Madagascar, adjacent to the Ranomafana National Park. We study twelve species of lemurs, as well as their aerial and terrestrial predators, and the botanical environment of the fragments in which they inhabit, to test our models on the behavior of extinction. We are searching for two Project Assistants for Term 3 (April 1-June 15, 2001). Project Assistants will focus primarily on a behavioral study of three of the lemur species, and secondarily, on botanical surveys of the forest fragments. There will also be some opportunity to work with lemur demographics transect teams, carnivore and bird surveys, ground-truthing satellite and aerial imagery, feces hormonal analysis and acquisition, and with interviewing local villagers. Assistants will be trained in project methodology and Madagascar natural history and will be given significant responsibility. Independence, perseverance, intelligence, adaptability, as well as diplomatic and social abilities are necessary characteristics for this position. Applicants should have a BS or BA in biological sciences with some behavioral or botanical experience (field/zoo/museum). French language ability is not necessary, but will facilitate the experience in the country. Individuals holding a masters in the biological sciences will be preferred, although we will consider all applicants. Please provide a cover letter detailing education and experience related to the Project, contact informa-

tion, as well as your reasons for participation. Also include a resume and two academic references (with phone numbers). Project Assistants will be responsible for airfare to and from Madagascar, travel within Madagascar not related to the Project, lodging outside of the field sites, and personal medical care. **Deadline: Jan 15.** Contact: Alex Dehgan, Committee on Evolutionary Biology, The University of Chicago, 1025 East 57th Street, CH402, Chicago IL USA 60637; Tel: (773) 702-4697; Fax: (773) 702-4699; E-mail: adehgan@midway.uchicago.edu.

Field Assistant. A volunteer field assistant is needed at the Mondika Research Center, Central African Republic to assist in an on-going long-term NSF sponsored study of western lowland gorillas. The current focus of the study is on the relationship of diet and social organization. Gorillas are not currently fully habituated to human observation at the site. The primary responsibility of the assistant is to aid in the habituation of gorillas. Duties include data collection on diet and ranging, data entry (Excel), fecal sample analysis, basic botanical work, as well as assistance with daily living activities at camp. Assistants will be trained on site. It will be necessary to learn Sango, a relatively easy language of the Central African Republic. The camp is located in an extremely remote area of the Central African Republic (one day's hike and one day's boat ride to nearest town). The successful candidate should be physically fit and self-reliant, have BA or BS degree (in Biology, Anthropology or related field), prior research experience, prior field experience, preferably in Africa. Ability to speak French, mechanical abilities, and/or computer skills are a

definite plus. **No salary is provided**, however the project will cover transportation and living costs in CAR. Appointment: One year, beginning early January. **Deadline: December 10, 2000.** Applications should include an application letter, CV, and names, addresses and phone numbers of two references. Contact: Diane Doran, Dept of Anthropology, SUNY at Stony Brook, Stony Brook, NY USA 11794-4364; Tel.: (631) 632-9445; Fax: (631) 632-9165; E-mail: ddoran@notes.cc.sunysb.edu.

Research Assistant. I am a Ph.D. student looking for a research assistant to participate in my dissertation field work. I am studying the reproductive ecology of long-tailed macaques, a group of monkeys indigenous to Southeast Asia. The research will be conducted at Gunung Palung National Park in West Kalimantan, Indonesia. The position involves recording behavioral and physiological data on a habituated troop of macaques. Applicants with experience in behavioral research, undergraduate study in biology, ecology, or anthropology, or with previous travel experience in third world countries are preferred. Starting dates are flexible, beginning as early as February 2001. The minimum commitment is for 1 year. Please send a letter of interest and a resume to katecs@post.harvard.edu. or Kate Clark-Schmidt, Department of Anthropology, SUNY Stony Brook, Stony Brook, NY 11794. Room and board are provided. **Deadline: Early January, 2001.** Contact: Kate Clark-Schmidt, SUNY Stony Brook, Department of Anthropology, Social and Behavioral Sciences Building 5th floor, Stony Brook, NY USA 11794; E-mail: katecs@post.harvard.edu.

Field Courses

Primate Behavior and Ecology Program

Florida State University-Panama is offering a 4-week 7-semester hour Primate Behavior and Ecology Program this summer from June 22nd to July 21st. As a part of the training, students will conduct directed research projects on the endangered Panamanian tamarin (*Saguinus geoffroyi*) and live at the Primate Refuge and Sanctuary of Panama (PRSP). The PRSP is located on the Atlantic side of Panama in a cluster of beautiful islands in Gatun Lake.

The following courses will be taught as a part of the Primate and Behavior Ecology Program: Primate Behavior, Approaches to the Study of Behavior and the Laboratory for Approaches to the Study of Behavior. The Primate Behavior and Ecology Program will provide tools for understanding behavioral and ecological processes and problems, while immersing students in a field research site focused on primate social ecology and conservation.

The cost of the program is \$2795. This price

includes tuition, books, food and lodging, and travel within Panama. Students attending must provide their own transportation to Panama. For information about admission to the Primate Behavior and Ecology Program, visit the web site of the PRSP at <http://www.fsu.edu/~cpanama/ipsp/Program.htm> or visit the web site of International Programs at: <http://www.international.fsu.edu>.

The deadline for the receipt of a completed application form is **January 19, 2001**. If you need to get in touch via phone, please call International Programs at FSU at the following numbers: (850) 644-3272 or 1-(800) 374-8581.

Georgia Tech and Zoo Atlanta present a four-week field course in animal behavior from June 18 - July 15, 2001 for 6 semester credits in psychology. The course takes place in Atlanta (4 days at the zoo), South Africa (3 days), and Kenya (20 days). The priority of the course is to provide intensive instruction in animal behavior and observational methodology. In Atlanta, students are taught data col-

lection methods and the behavior of East African mammals from a variety of zoo, academic, and field scientists. Students then use this information in Africa to conduct daily observations on a variety of species. Observations are conducted in both national parks and private reserves, which permits students to compare the behavior of a single species across settings. Students also use the comparative psychology approach to examine behavior across closely-related taxa. Daily observations are supplemented by readings, discussions, and lectures by field scientists. The course also places a strong emphasis on conservation, and students read and discuss many of the issues related to conservation in Africa. Spaces are limited to 12 students. The approximate cost of the course is \$6100 and applications must be mailed by **February 15, 2001** (early applications encouraged). For additional information and an application, contact: Dr. Tara Stoinski, Coordinator of Primate Research, Zoo Atlanta, 800 Cherokee Avenue, Atlanta, GA 30315; (404) 624-5826; stoinski@mindspring.com.

Conference and Workshop Announcements

British Ecological Society, 2000 Winter Meeting, 3-5 January, 2001, University of Birmingham, England, UK. Contact: British Ecological Society, 26 Blades Court, Deodar Road, Putney, London SW15 2NU, England, UK.

International Primatological Society, 7-12 January 2001, Adelaide, Australia. Host: Australasian Primate Society. President, Mr. John Lemon, Western Plains Zoo, Dubbo, NSW. Tel.: +61 8 8363 0068; Fax: +61 8 8363 0354; Conference Chair Graeme Crook's e-mail addresses: APS_Editor@msn.com.au or trycrook.graeme@etsa.com.au. Visit the Congress website at www.primates.on.net for latest updates, including a list of proposed symposia.

Australasian Primate Society, January 2001. The Annual General Meeting will be held during the IPS Congress in Adelaide. The next APS Conference will be held in late 2001 at a venue to be determined. Contact: Graeme Crook E-mail: APS_Editor@msn.com.au.

Ecology of Insular Biotas (International Conference), 12-16 February, 2001, Victoria University of Wellington, Wellington, New Zealand. Focus: Ecological patterns and processes of importance to isolated biotas, including true islands, and natural and artificial habitat islands. Contact: Christa Mulder, School of Biological Sciences, Victoria University of Wellington, P.O. Box 600, Wellington, New Zealand. E-mail: sbs-islands-conf@vuw.ac.nz. Website: <http://www.vuw.ac.nz/sbs/conferences/island.shtml>.

The Association for the Study of Play (TASP) Annual Meetings. The Association for the Study of Play (TASP) will meet at the Hampton Inn, San Diego, California, February 21-25, 2001, in conjunction with the Society for Cross-Cultural Research (SCCR). Contact: L. Diane Parham, TASP Program Chair, Department of Occupational Science, University of Southern California, 1540 Alcazar Street, CHP 133, Los Angeles, CA 90089, phone: 323-442-2879, fax: 323-442-1540, e-mail: Lparham@hsc.usc.edu.

Midwest Animal Behavior Society Regional Meeting, Columbia Missouri, March 16-18, 2001. Please refer to the meeting announcement at: <http://www.mabs.missouri.edu/Meeting> information, updates, and registration will be posted at this website.

Primate Society of Great Britain, 10 April 2001, Bolton Institute, Bolton, Lancashire, England, UK. This one day open meeting is intended to reflect the diversity of current primatological research. Postgraduate research students particularly are encouraged to attend and

give papers. For information or to offer a paper, contact Geoff Hosey, Biology & Environmental Studies, Deane Road, Bolton, BL3 5AB, UK; Tel. +44 (0) 1204 903647; Fax +44 (0) 1204 399074; E-mail: gh2@bolton.ac.uk.

Great Apes at the Threshold: Implications for Law, Ethics, Conservation and Science. A Conference Sponsored Jointly by The Kennedy Institute of Ethics and Tufts University School of Veterinary Medicine, April 28-May 1, 2001, Boston Park Plaza Hotel. The goal of the conference is to evaluate the tension created by the changing ethical and legal status of the great apes, particularly in the international arena, and the continued demand for their use to serve human ends. The conference is intended for primatologists and other scientists, philosophers and other ethicists, students of the humanities and law, legislators, the animal protection community, and the interested public. Contact: The Kennedy Institute of Ethics, Georgetown University, Box 571212, Washington, D.C. 20057-1212. Email address: kicourse@gunet.georgetown.edu; Tel: (202) 687-8099; Fax: (202) 687-8089.

ORAGE 2001 ORALity and GESTuality, Aix-en-Provence (France) June 18 - 22, 2001 International conference Languages: French, English. The major theme of this meeting is the use of voice and gestures in the management of interactive time and space. Topics: ethology of human communication, animal and cross-species communication, communicative gestures, voice (prosody), relationship between gestures and voice, bimodality, multimodality and mental representations, production and perception of voice and gesture, semiotic models for voice and gesture analysis, universals and cultural variations, social contexts and interaction, pathological contexts, developmental approaches, expression of emotions, methodology, instrumentation and technology in voice and gesture analysis. Contact: Colloque ORAGE 2001, Laboratoire Parole et Langage, Université de Provence, 29, av. R. Schuman, 13621 Aix-en-Provence Cedex 1, France; Tel: +33 (0)4 42 95 36 37; Fax : +33 (0)4 42 59 50 96 (specify "colloque ORAGE 2001"); E-mail: orage2001@lpl.univ-aix.fr; Internet : <http://www.lpl.univ-aix.fr/~gevoix/ORAGE2001>.

"Wildlife and Livestock Disease and Sustainability: What Makes Sense?" International Joint Conference between Society for Tropical Veterinary Medicine (STVM) and the Wildlife Diseases Association (WDA), 22 - 27 July 2001, Kwa Maritane and Bakubung, Pilanesberg National Park, South Africa. Further information will be available from STVM <http://www.cvm.okstate.edu/~stvm/> and WDA <http://www.wildlifedisease.org> and their re-

spective newsletters. Participants are invited to submit papers and posters for the sessions. For deadlines and other details and forms, please see the Conference web page at <http://www.eventdynamics.co.za/stvm/index.html>. Information/Enquiries: STVM/WDA 2001, c/o Event Dynamics, Box 411177 Craighall 2024 RSA; Tel: +27-11-442 6111; Fax: +27-11-442 5927; E-mail: millissa@eventdynamics.co.za.

Workshop on Orangutan Reintroduction and Protection: Prespectives at 10 Years – Orangutan Reintroduction Project, 15-18 June, 2001, Wanariset-Samboja & Balikpapan, E. Kalimantan, Indonesia. 2001 will mark ten years of operation for the Wanariset Orangutan Reintroduction Project (ORP). ORP was founded in 1991, near Balikpapan, East Indonesian Borneo, to support Indonesian law enforcement against the illegal keeping of captive orangutans, to provide sanctuary to orangutans freed from captivity, and to rehabilitate and reintroduce ex-captive orangutans to free forest life. ORP is sponsoring an international workshop with the aims of presenting and evaluating its own operations and research over the last ten years, discussing future directions, and considering broader issues of orangutan conservation. For further information, abstract submission forms, or to discuss possible contributions: Jeane Mandala P.O. Box 500, Balikpapan 76103, Indonesia Tel: +62 (0)542 413 069, Fax: +62 (0)542 410 365 E-mail: boswan@indo.net.id. Dr. A. Russon, Secretary, Scientific Advisory Board, Dept. of Psychology, Glendon College, 2275 Bayview Ave., Toronto, Ont. M4N 3M6, Canada. Tel: +1 416 736 2100 ext. 88363, Fax: 1 416 487 6851 E-mail: arusson@gl.yorku.ca. Deadline for abstracts is **March 15, 2001**.

The Animal Behavior Society's 38th annual meeting will be held 14-18 July 2001 at Oregon State University, in Corvallis, Oregon. Plenary speakers include Eliot Brenowitz, Harry Greene and Ellen Ketterson. Symposia include 'Aggression and group organization in animal societies', 'Behavioral genetics for the next decade', 'Detecting and measuring mating preferences' and 'Song Learning'. See: <http://www.animalbehavior.org/ABS/Program>, or contact the local hosts Andy Blaustein (blaustea@bcc.orst.edu) or Lynne Houck (houckl@bcc.orst.edu).

American Society of Primatologists, 8-11 August, 2001, Savannah, Georgia. Contact: Bob Lessnau, Armstrong Atlantic State University. Details are available in this issue of the *ASP Bulletin* (and future issues) as well as on the ASP's web site (www.asp.org). ASP members will receive a call for abstract submissions and registration packets in the mail SOON.



Janette Wallis, Ph.D. - Executive Secretary
AMERICAN SOCIETY OF PRIMATOLOGISTS
Department of Psychiatry & Behavioral Sciences
University of Oklahoma Health Sciences Center
P.O.Box 26901
Oklahoma City, OK 73104-5020

(Please do not send Change of Address to this address.
Send to Steve Schapiro, Ph.D., UTMDACC, Dept. Vet. Res.,
Rte. 2, Box 151-B1, Bastrop, TX 78602)