

## A Message from the President...



Dear Colleagues,

I represented ASP at the American Institute of Biological Sciences (AIBS) Council in early December. The role of AIBS is “use science to inform decision-

making that advances biology for the benefit of science and society.” ASP has been an organizational member of AIBS for years. I intend to become more involved with AIBS, and to communicate this involvement with ASP members.

The topic of this year’s Council was “The Role of Peer Review in Informed Decision-making.” We are all involved in peer review – whether it is as an author (manuscript or grant) or reviewer (manuscript or grant). At its best, peer review identifies the best work; diagnoses weaknesses and suggestions for improvement; and indicates the likely best investment of resources into science.

Many topics were covered during the Council, including: How closely do our peer review processes approach our ideals? Can we identify the best practices in peer review for the different purposes identified above? How can we measure quality in peer review? Additionally, we discussed Open Access and making all scientific data available to the public. What might be the impact of giving public access to scientific information?

What role can ASP play in enhancing peer review?

I believe that ASP can provide opportunities professional development – especially (though not exclusively) for early career scientists so that they understand and value the role of peer review, their responsibilities to the science, and also have the training to be effective peer reviewers. I am pleased to announce that at the 2017 annual meeting, the President’s Forum will be on the topic of PR. I am working with Paul Garber to develop the programmatic content for the Forum.

...continued next page

### Renew Your Membership!

Log onto the [Members Only](#) section of the ASP website to renew, and encourage new members to join!

Full Member dues: \$95\*

Student Member dues: \$65\*

Retired Member dues: \$25

\*Includes e-subscription to *AJP*

...continued from previous page

I am pleased to report that ASP joined 58 other scientific organizations and signed on to a letter to President-elect Trump about the importance of biological research. Specifically, the letter calls for the President-elect to:

- 1) Make scientific research a budget priority,
- 2) Appoint a Presidential Science Advisor with strong scientific credentials, and
- 3) Direct his administration to use peer-reviewed scientific information to inform decisions.

The letter was submitted to the transition team on December 27, 2016. The full text of the letter can be found on the ASP website.

I am pleased to announce the Committee chairs for 2016 - 2018: **Lynne Isbell**, Awards and Recognition; **Michelle Bezanson** and **Stacey Tecot**, Conservation; **Karen Hambright** and **Michael Reid**, Education; **Corinna Ross**, Finance and Membership; **Christopher Schmitt**, Media and Public Engagement; **Susan Pavonetti**, Primate Care; **Erin Kinnally**, Program; **Matthew Novak**, Publications; **Larry Williams**, Research and Development; and **Morgan Chaney** and **Brett Frye**, Student Committee (ad hoc). I encourage you to become involved in the Society. If you wish to serve please contact the committee chair.

We have applied to have our Twitter account verified. We realized that @ASPvoice - the official Twitter account of the Society - does not have verified status. This will indicate that all tweets from the account are the official statements from the society (something which I think is becoming increasingly important) but will also give us greater visibility.

Please contact me with your thoughts and feedback ([Kimberley.phillips@trinity.edu](mailto:Kimberley.phillips@trinity.edu)).

Kimberley A. Phillips

President, ASP



*Rhesus macaques (Macaca mulatta).*  
*Photo courtesy of Amanda Dettmer.*

## Join us for ASP's Ruby Anniversary! 40<sup>th</sup> Anniversary Meeting



Artwork by Michelle Bezanson

**August 25-28, 2017**  
**Washington Plaza Hotel**  
**Washington, DC**

**Hosted by: Amanda M. Dettmer,**  
**PhD**

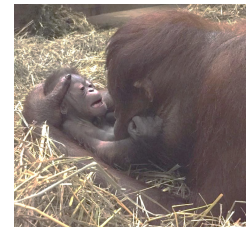
**#ASPDC2017**

**REGISTRATION opens**  
**January 6, 2017**

**[www.asp.org/meetings](http://www.asp.org/meetings)**

### **Opening Reception August 25, 2017 at the National Zoo!**

Hosted by Friends of the National Zoo & The George Washington University's Columbian College of Arts & Sciences



*Batang, the baby orangutan born at the National Zoo in September 2016. Photos courtesy of the National Zoo.*

### **Call for Symposia/Roundtables/Workshops**

Preliminary abstracts for symposia, roundtables, and workshops are due by **February 1, 2017** to Erin Kinnally at [elkinnally@ucdavis.edu](mailto:elkinnally@ucdavis.edu). We welcome proposals for regular symposia as well as the prestigious **Interdisciplinary Symposium**, which runs unopposed by other sessions.

### **Call for Abstracts**

Abstract submission for talks and posters opens January 1 in the Members Only section of the website (<https://www.asp.org/portal/login.cfm>). The deadline for abstracts and early registration is **March 1, 2017**.

### **Confirmed Speakers**

**Distinguished Primatologists Address**  
Robert Seyfarth, Ph.D. & Dorothy Cheney, Ph.D.  
University of Pennsylvania

**2016 ASP Early Career Award Winner's Address**  
Bernardo Urbani, Ph.D.  
Center for Anthropology, Venezuelan Institute for Scientific Research

**Past President's Address**  
Karen Bales, PhD  
University of California, Davis  
California National Primate Research Center

## 2016-2018 ASP Committee Members Finalized

Each ASP Committee is chaired by a full ASP member (with the exception of the Student Committee), and all committees welcome new members at any time! Please contact the chair (denoted in **bold**) if you are interested in joining!

### Media & Information Committee

#### Chair: Christopher Schmitt

John Capitanio  
Dee Higley  
Katie Hinde  
Justin McNulty  
Michele Mulholland  
Erin Kane  
Kathy West

### Conservation Committee

#### Co-Chairs: Michelle Bezanon & Stacey Tecot

Alex Georgiev	Andrea Eller
Bert Covert	Christopher Shaffer
David Fernandez	Erin Riley
Emma Cancelliare	Kathy Jack
Grainne McCabe	Juan Carlos Serio Silva
Krista Millich	Susan Lappan
Sylvia Atsalis	Wendy Erb

### Primate Care Committee

#### Co-Chairs: Susan Lambeth & Kris Coleman

Andrea Clay  
Corrine Lutz  
Jaine Perlman  
Greg Wilkerson  
Lisa Reamer  
Melissa Truelove  
Dawn Abney  
Grace Fuller  
Eric Hutchinson  
Darcy Hannibal  
Lydia Hopper  
Elizabeth Magden  
Rachel Haller  
Melinda Novak  
Darren Minier

### Education Committee

#### Co-Chairs: Karen Hambright & Mike Reid

Eliza Bliss-Moreau	Katie Chun
Anje Deppe	Lynne Miller
Annika Paukner	Cory Ross
Jessica Vandeleeest	Francisca Vidal-Garcia
Tamara Weinstein	Kathy West

### Awards & Recognition Committee

#### Chair: Lynne Isbell

Linda Fedigan  
Justin McNulty  
Andreas Koenig  
Leanne Nash

### Student Committee (*Ad hoc*)

#### Co-Chairs: Morgan Chaney & Bret Frye

Ashley Edes	Drew Altschul
Caroline Jones	Chloe Karaskiewicz
Alexander Greig	Anna Katogirtis
Stephanie Poindexter	Colin Bran
Shannon Subers	Tiffany Baker
Zoe Hammis	Raymond Vagell

### Publications Committee

#### Chair: Matthew Novak

Entang Iskandar  
Joyce Parga  
Carrie Veilleux

### Research & Development Committee

#### Chair: Larry Williams

Carola Borries	Kai McCormack
Janice Chism	Brenda McCowan
Daniel Gottlieb	Charles Menzel
Caroline Hostetler	Ken Sayers
Michael Jarcho	Andreas Koenig

---

## COMMITTEE UPDATES

### Awards & Recognition

For the past two years the Awards and Recognition Committee (ARC) has consisted of **Linda Fedigan, Peter Judge, Andreas Koenig, Leanne Nash, and Lynne Isbell** (chair). The committee is saying goodbye to **Peter Judge** in 2017, and we wish to thank him for his many years of service both as a member and chair of the committee. We welcome **Justin McNulty** as the new member of the committee for a two-year term.

The ARC encourages nominations as a way to honor primatologists who have contributed to our discipline or to the ASP. Is there someone you think should be recognized for their long-lasting contributions to primatology? Someone who has devoted substantial time and energy over the years to the ASP? Someone early in their professional career who has already made important contributions? Please see <https://asp.org/grants/awards/index.cfm> for details on the nomination process. **The nomination deadline is May 1, 2017 for the following awards:**

**Distinguished Primatologist Award** for career achievement in primatology

**Senior Research Award** for research achievement by one who has not received the highest academic degree in his/her field

**Early Career Award** for exceptional contributions by a primatologist who is less than seven years past receiving the Ph.D.

**Distinguished Service Award** for long-term contributions to the ASP

**Special Recognition/Achievement Award** for exceptional one-time or short-term service to the ASP

~Lynne Isbell, Chair, Awards and Recognition Committee

### Research & Development

**Small grants:** Research & Development small grants will be due June 1, 2017 with awards announced at the 2017 annual meeting in Washington DC. The grants are available to all society members and are limited to \$1500. We will upload a new application form after the new so keep a watch for more information then. If you have any questions about application process please contact Larry Williams at [welawrence@mdanderson.org](mailto:welawrence@mdanderson.org) or [research@asp.org](mailto:research@asp.org)

**Deborah Moore Award:** The Deborah Moore Memorial grant will awarded in 2017 for the first time. Deborah was a primatologist who passed away in March 2016 after a courageous battle with breast cancer. Her friends and colleagues have raised money to fund three awards of \$2000 each for 2017 for hypothesis-driven field studies. The award is open to early career researchers who can demonstrate their passion and dedication for primate field work. A general announcement and instructions will be applying will be sent out in early December with around the first of March. If you have any questions please contact Larry Williams at [welawrence@mdanderson.org](mailto:welawrence@mdanderson.org) or [research@asp.org](mailto:research@asp.org).

~Larry Williams, Chair, Research and Development Committee

...continued next page

---

...continued from previous page

## Conservation

### Upcoming deadlines

We have two important upcoming deadlines. First, **Conservation Small Grants** are due by January 31, 2017. All applicants are required to be ASP members. Applicants from non-human primate habitat countries are eligible for free membership with the support of two voting member sponsors. Memberships can take a week to process so if you are mentoring nonmembers during the application process, please remind them of this process. As you prepare your application or review your mentee's application, please keep in mind that we are strict about following ALL guidelines. We return many applications due to page length, word count, or missing sections. Second, **Conservation Award Nominations** are due April 2, 2017. This award provides recognition and financial support for students and early career investigators from habitat countries who demonstrate potential for making significant and continuing contributions to primate conservation. We keep applications on file for three years.

### Auction

We had an amazing auction at the joint ASP/IPS meeting in Chicago. Thanks to everyone who donated and an extra big appreciation & thanks to the talented artists that donated original prints, paintings, sculpture, and photographs. The auction earned a total of **\$8621.36** split equally between the ASP and IPS. As you shop this holiday season, keep looking for primate-themed goodies for #ASPDC2017! Please contact Stacey Tecot and/or Michelle Bezanson if you have fund-raising ideas or fund-raising connections. All of the funds that the committee raises are distributed to recipients of the Conservation Award and Conservation Grants.

### Committee Updates

The Conservation Chairs would like to thank their outstanding committee for their hard work throughout the year and during the conference! Thank you: **Alex Georgiev, Andrea Eller, Bert Covert, Christopher Shaffer, David Fernandez, Emma Cancelliere, Erin Riley, Grainne McCabe, Juan Carlos Serio Silva, Kathy Jack, Krista Milich, Susan Lappan, Sylvia Atsalis, and Wendy Erb!** Emma Cancelliere and Kathy Jack will be stepping down from the committee. We appreciate all of their hard work! We are happy to report that **Andrea Baden** will be joining the ASP conservation committee. She brings expertise in behavioral ecology, lemur conservation, and methods of genetic analysis, and is active in the IUCN.

This year, the Committee decided to allocate more resources to the **ASP Conservation Committee's social media presence**. Head of the media subcommittee, Andrea Eller, will lead efforts to increase web visibility for ASP primate conservation efforts and the primatologists who make it possible. Be on the look out for our new posts featuring Q and As with primatologists dealing with issues in conservation, profiles of artists who are featured in our yearly auctions, and updates from primatologists we support through small conservation grants. Have something to contribute, or an idea of something you'd like to see from us on the web? Email Andrea at [are@uoregon.edu](mailto:are@uoregon.edu)

In a continued effort to increase visibility, promote fundraising, and highlight the work of our grant recipients, the Conservation Committee has been working to create a series of promotional videos featuring the work of former grantees. This effort, led by Emma Cancelliere and Krista Milich, incorporates footage of grant recipient interviews with music and photos from their field sites. The videos highlight how funding from the ASP Conservation Small Grant impacted their work and local conservation efforts, and each video ends with information about how people can donate. We currently have two videos complete, featuring Jill Pruetz and Abby Ross, and are working to make more.

Finally, do not forget to choose ASP via Amazon Smile when shopping online! <http://smile.amazon.com/>

~Michelle Bezanson and Stacey Tecot, Co-Chairs, Conservation

...continued next page

...continued from previous page

## Education

ASP Education Committee Co-Chairs, **Mike Reid** and **Karen Hambright** are soliciting for and welcome input from the general membership for ideas or suggestions concerning the following:

1. a pre-conference educational outreach opportunity
2. a lunch workshop for students and early career members
3. outreach materials for K-12 students

We are also recruiting additional members who are interested in either educational outreach and/or the annual student research competition. Please feel free to contact us [khambright@ccga.edu](mailto:khambright@ccga.edu) or [mj.reid@utoronto.ca](mailto:mj.reid@utoronto.ca).

### Get Social With ASP!

Connect with ASP and this year's meeting!



Don't forget to join the ASP members Facebook page via the members-only section of [www.ASP.org](http://www.ASP.org).



*Titi monkey (Callicebus cupreus)  
father and daughter.  
Photo courtesy of Kathy West.*

---

## CONSERVATION GRANT REPORT

### **Participatory Action Research for Primate Conservation and Community Development**

#### **Kugonza Moses and Busobozi Richard**

Kibale National Park is rich in biodiversity including hosting 13 species of primates. However, despite efforts to provide jobs to locals, poaching still occurs within the park boundaries affecting animal populations. For example, chimpanzees suffer from new snare wounds each year despite an on-going snare removal program. Crop raiding is a serious threat to conservation initiatives. Because of crop raiding, farmers suffer great losses to their subsistence livelihoods as a result of living adjacent to a protected area. They are not compensated for their losses and place the blame on the field assistants who study these animals. They say “YOUR animals are crop raiding!”

In an attempt to alleviate tensions, the funded project aimed to find sustainable solutions to the crop raiding problem. The project is designed to be Participatory Action Research, which empowers the community by mobilizing them towards reducing crop raiding followed by studying the effectiveness of these methods for alleviating the problem. “Subjects” conduct the research on their own communities and determine how to use the results. Participatory Action Research can impact conservation efforts in areas where outside research on environmental issues and enforcing conservation strategies on local communities cause local people to be at odds with conservation efforts.

We visited households in the 4 target communities (Kyamugara, Kanyansohera, Isule, and Nyabingyungu) and conducted surveys. Household visits (homes within 1 km of the park) and surveys were conducted in the local language, Rutooro. Surveys were

conducted at 90% of households visited. This resulted in a total of 115 interviews.

Interviewees were asked about their opinion of Kibale National Park and what effects are associated with living near the park. Sixty-five per cent of respondents had a negative view of the park, 11% were neutral, and 24% had a positive view. Crop raiding was the top reason indicated for negative views of the park. Even people with a positive view of the park complained about crop raiding. Elephants and baboons were the worst crop raiders, although seven nonhuman primate species crop raid in this area. Crop raiding has long-lasting impacts as gardens are guarded day and night. Family members remain vigilant around the clock, rendering them unable to pursue other jobs. Children often miss school and eventually drop out.

When asked what benefits there are to living near the park, 53% said there were none. Of the people who noted benefits for living near the park, the most common response (33%) related to having a favorable climate (rainfall, fertile soil, fresh air, or favorable climate/weather), while 28% were related to collecting items (firewood and traditional medicines) from the forest. Multiple respondents, however, commented that access has been limited; of all the negative effects 17% were associated with restricted access to entering the park, collecting firewood, or gathering local medicine. The third most common response (20%) was employment opportunities.

The number one suggestion for improving the image of the park was to prevent crop raiding. The project aims to hold workshops and meetings with the farmers to explain how living near the park benefits their crops. The project also aims to work with a local

...continued next page

---



...continued from previous page

agriculturalist to plant selected crops on the farmer's land neighboring the park and to work with the Uganda Wildlife Authority to dig deep, wide trenches along the boundary of the park. Finally, the project hopes to identify places where bee boxes can be established and placing bee boxes at those locations. Now is a time for long-term researchers to try a new role as facilitators to these projects by providing logistical support and working through the steps of designing, obtaining funding, and running farmer proposed projects. The hope is that as people from the local community learn how to apply for funding and conduct projects on their own, the reliance on outside support will diminish and a more comprehensive approach to dealing with community needs will prevail.



*Busobozi Richard standing in a trench to illustrate the current size and condition.*



*Moses and Richard on their way to conduct interviews.*



*Kugonza Moses walking through fields to a household.*

---